



VINEYARD WIND

Fisheries Advisory Board Vineyard Wind Project Update

March 11, 2020

Staff Updates

Rachel Pachter
Chief Development Officer
508-680-6455
rpachter@vineyardwind.com

Jeannot Smith
Marine Liaison Officer
904-613-0134
jsmith@vineyardwind.com

Caela Howard
Fisheries Liaison
508-386-9832
choward@vineyardwind.com

Vineyard Wind 1 Update

Milestone	Anticipated Date
Supplemental Environmental Impact Statement (SEIS)	June 12, 2020
Public Comment Period Closes SEIS	July 27, 2020
Final EIS	November 13, 2020
Record of Decision	December 18, 2020

Monthly Port Hours



Where: Point Judith conference room
above Superior Trawl

55 State St. Narragansett, RI
02882

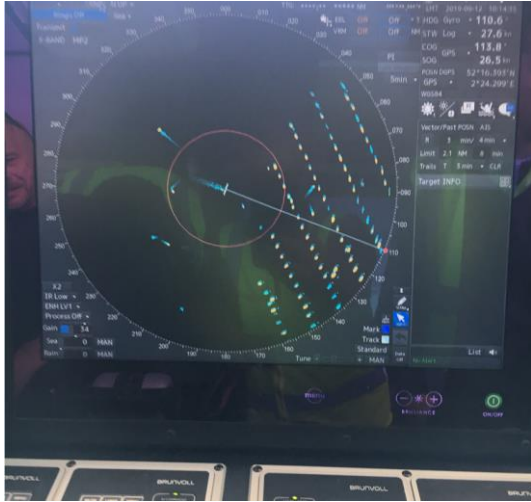
When: First Thursday of every month
8am-12pm

New Bedford Port Authority

52 Fishermen's Wharf New Bedford, MA
02740

First Friday of every month
8am-12pm

Marine Radar & VHF Radio R21 Study



- Vessel profiles typical to area
- Commonly used “pulse” magnetron radar & latest broad-band “doppler” radar
- R21 VHF/DF testing with USCG

Figure 4.4: Trial 2 – Stationary Position B2, Target Vessel R1, No Gain Reduction

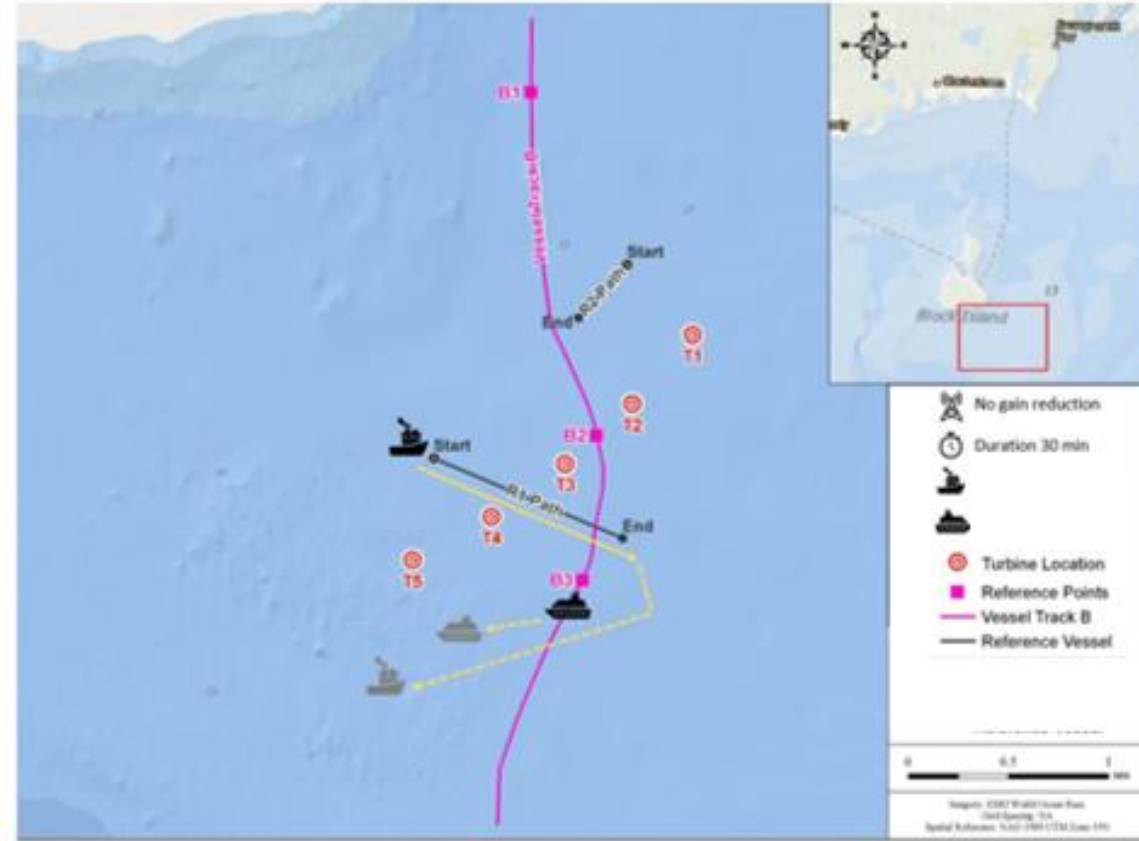


Figure 4.5: Trial 2 – Stationary Position B3, Target Vessel R1, No Gain Reduction

Vineyard Wind
Marine Radar and Radio I

Baird.



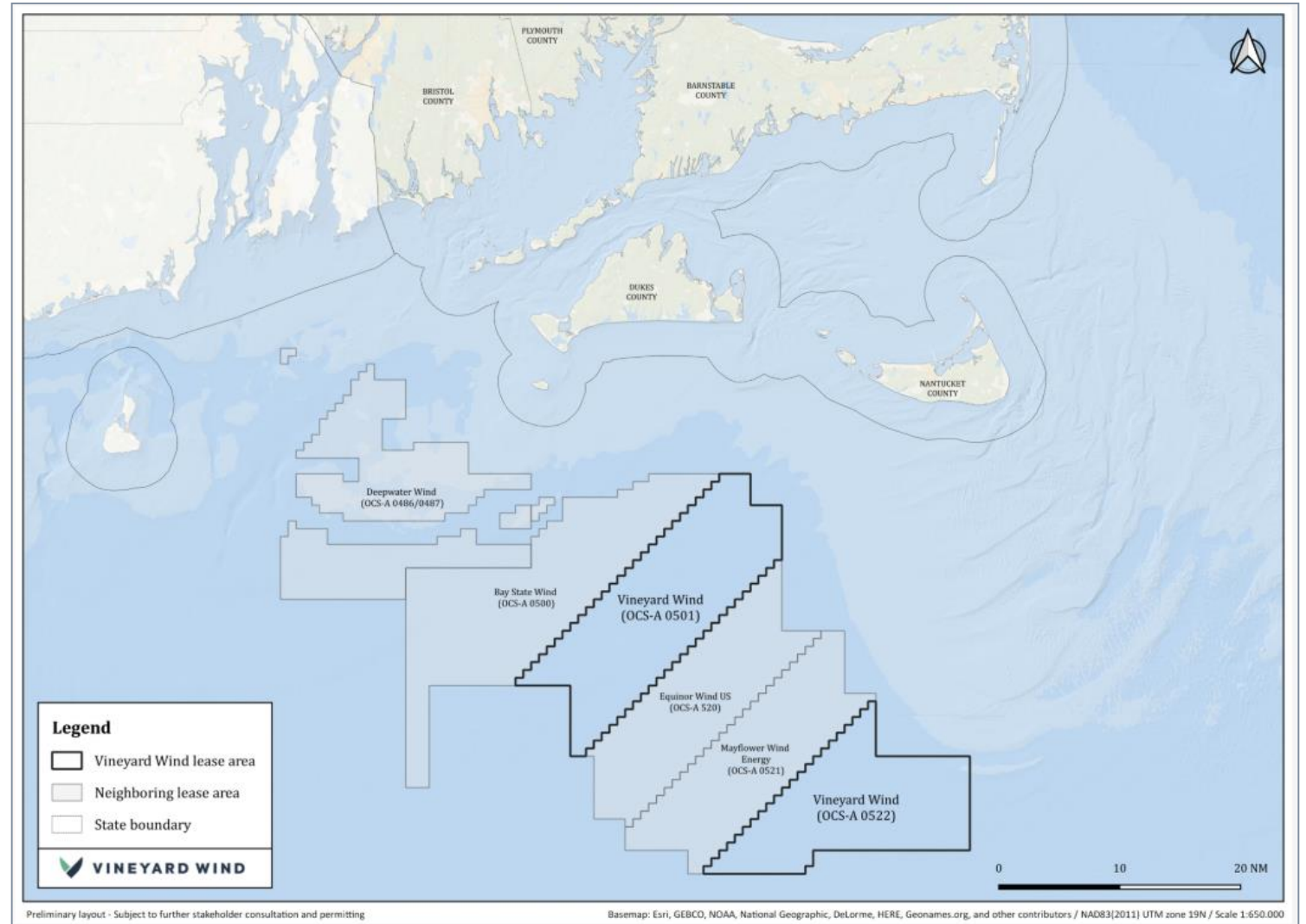
VINEYARD WIND

Fisheries Advisory Board Vineyard Wind 501 South Update

March 11, 2020

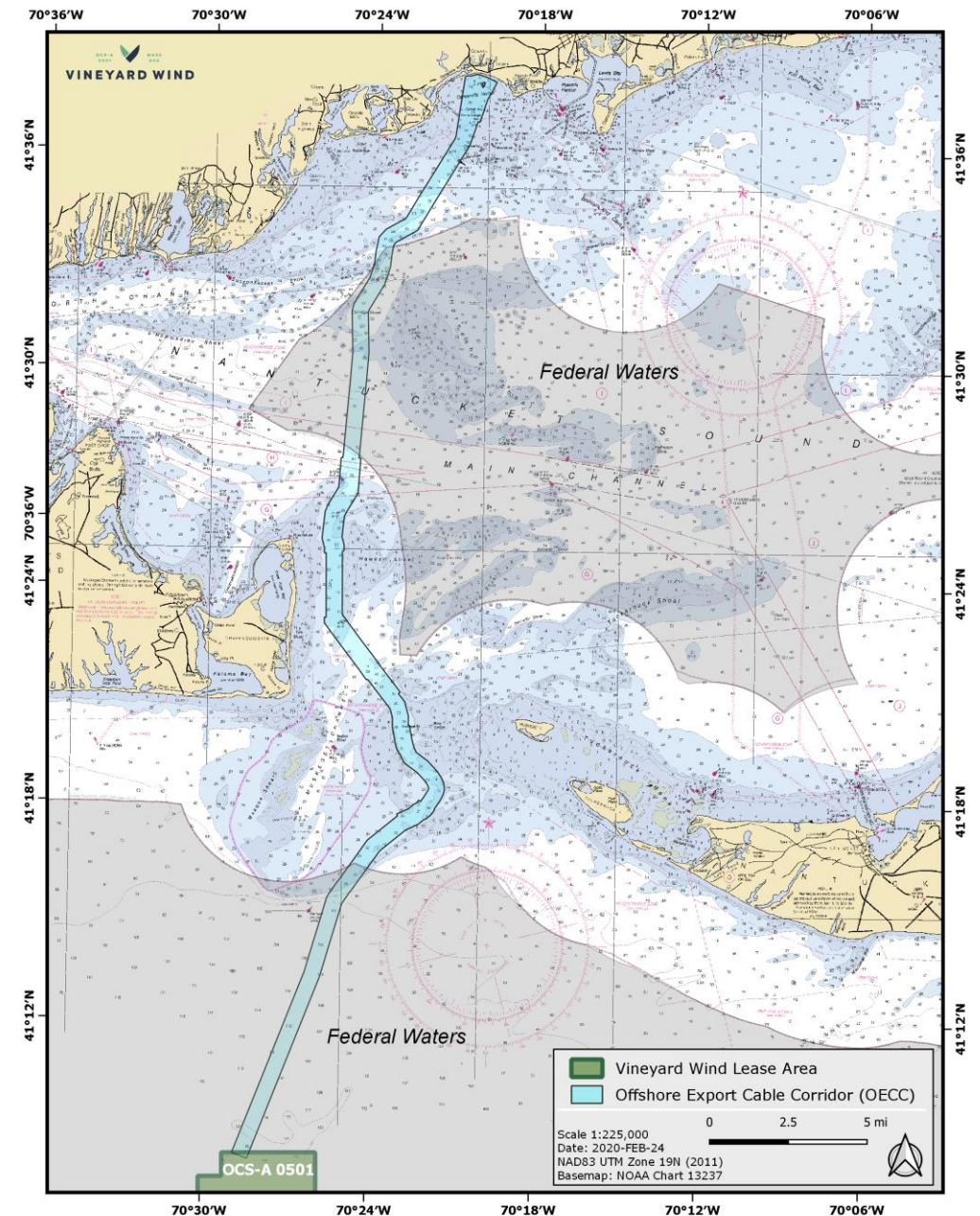
Vineyard Wind 501 South Development

- Located in Lease Area OCS-A 0501
- 18 NM SW of Martha's Vineyard
- 20 NM S of Nantucket
- Project envelope approach
- Phased development
- 1 x 1 NM Spacing, EW alignment



501 South Offshore Cable Corridor

- Offshore export cable route into Massachusetts
- Routing considerations include:
 - water depth, bathymetry, SSU areas, etc.
 - Federal and state waters
 - Avoidance of mapped eelgrass
 - Avoidance of hard/complex bottom areas
- Evaluating landing points in Barnstable, MA



This product is for informational purposes and may not be suitable for legal, engineering, or surveying purposes.

Contact Details

Chris Rodstrom
Technical Design and Permitting
Manager
978-793-2245
crodstrom@vineyardwind.com

Ben Frothingham
Director of Permitting
508-742-7049
bfrothingham@vineyardwind.com

Matthew Robertson
Senior Manager of Environmental
Affairs
860-912-1521
mrobertson@vineyardwind.com

Survey Activities

- Geophysical
- Geotechnical
- Avian
- Marine mammals and sea turtles
- Fisheries



A Multifaceted Assessment of Recreational Fishing Effort for Highly Migratory Species (HMS) in and around the Southern New England Wind Energy Areas

Dr. Jeff Kneebone (PI)

Research Scientist (NEAq/ACCOL)

jkneebone@neaq.org



Anderson Cabot
Center for Ocean Life
at the New England Aquarium

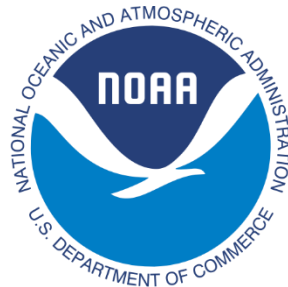
Connor Capizzano (co-PI)

PhD Candidate (UMass Boston/ACCOL)

Connor.Capizzano001@umb.edu



Data contributions from:



Recreational HMS Effort Survey

- Goal: document spatial extent of recreational fishing effort for HMS over last 5 years, identify areas of highest use
- <https://www.surveymonkey.com/r/SFW3TDN>
- Went live on August 23
- Advertised through
 - NEAq Social Media
 - Online discussion forums
 - On the Water magazine
 - Fishermen's social media
 - Vineyard Wind website
 - Email correspondence

The screenshot shows the top navigation bar of the 'On The Water' website, which includes links for MAGAZINE, TV, STRIPER CUP, SHOP ON THE WATER OUTFITTERS, MY ACCOUNT, and a search icon. Below the navigation bar is a banner for 'BY FISHERMEN. FOR FISHERMEN.' with the 'On The Water' logo and the tagline 'THE ANGLER'S GUIDE' and 'Subscribe Today!'. The main article title is 'Survey for South of the Vineyard Fishermen' with a sub-headline 'Help researchers gauge how much fishing effort occurs within the wind energy lease areas.' and a byline 'BY DTW STAFF AUGUST 25, 2019'. The article content features a nautical chart of the South of the Vineyard area with various fishing spots labeled: 'The Gulley', 'Coxes Ledge', 'The Claw', 'Inside Fingers', 'Gordon's Gully', 'The Owl', 'The Star', 'The Banan', 'The Lanes', 'The Dump', 'The Fingers', '31 Fathom Hole', 'Tuna Ridge', 'Suffolk Wreck', 'The Horns', 'Jenny's Horn', 'Ryan's Horn', 'The Horns', 'The Starfish Hole', and 'The Starfish Hole'. To the right of the chart is a sign-up form titled 'Know Where the Fish Are' with the text 'Sign up for our Free Fishing Reports' and fields for 'Email' and 'Zip', followed by a 'SIGN UP' button.

Fishery Dependent Data Analysis

Goal: document spatial extent of recreational fishery for HMS and identify areas of highest use, roughly approximate total effort

Data sources

- NOAA Large Pelagics Survey (2002 – 2018)
 - Intercept Survey Data (Dockside interviews)
 - Survey covers VA to ME
- Conventional tagging data (CTD)
 - Only recreational rod and reel events
 - Full time series (1954 – 2019)
 - NOAA SEFSC Cooperative Tagging Program
 - NOAA Cooperative Shark Tagging Program
 - The Billfish Foundation
 - American Littoral Society

Questions?

Thank you!