

FISHERIES WORKING GROUP

May 16, 2019

- Updates:
 - Fisheries studies
 - Geological survey
- Recreational fishing
- Proposed compensatory mitigation program

FISHERIES STUDIES

Trawl Vessels Needed

Recommended:

- Boat Length: 70 – 90'
- Engine horsepower: 400 – 850 HP

Required:

- Ability to house 3 scientists for overnight accommodation
- Ample deck space to work up the catch
- No recent fisheries violations
- Vessel safety check

If interested, please contact:

Dr. Pingguo He (fish@umassd.edu)

Gear Needed

66" Thyboron Type 4 doors

Rent or buy

Storage Space Needed for

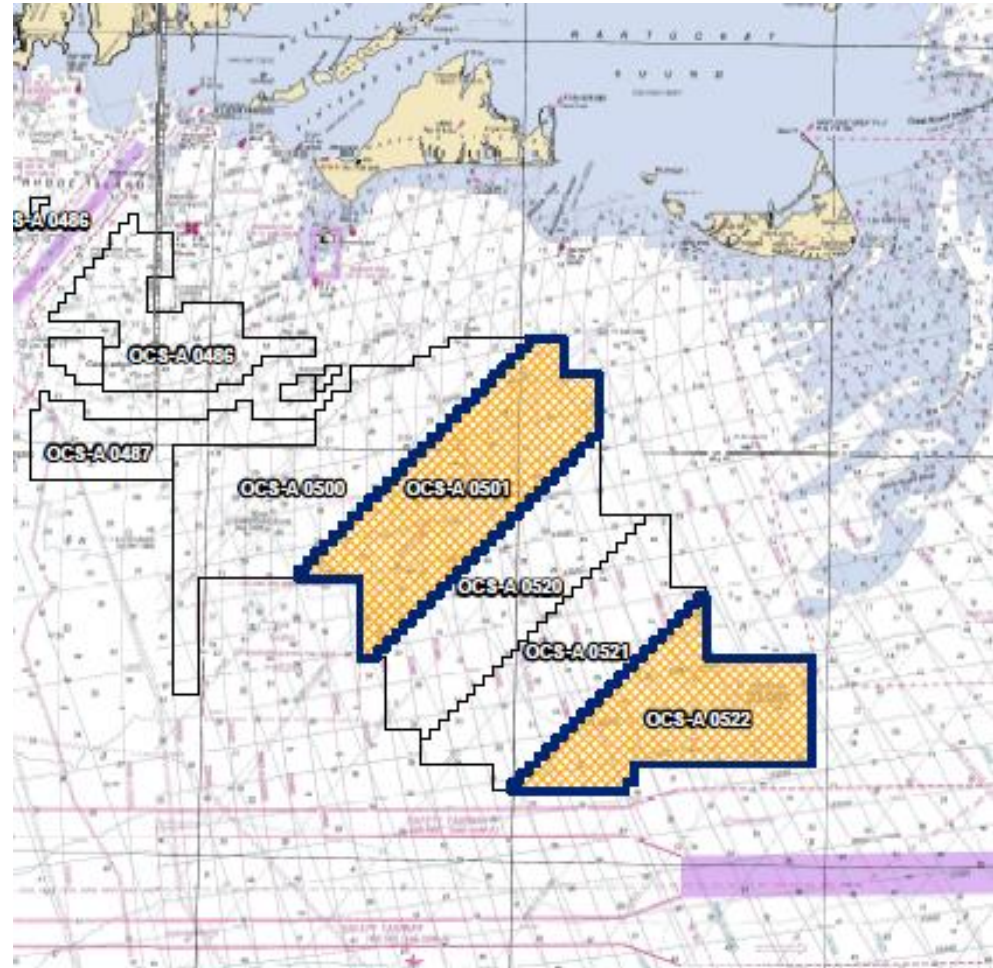
Lobster gear: ~ 5,000 sq feet

Inside storage for extra net and doors

2019 GEOLOGICAL SURVEYS

Surveys will take place in VW lease areas 501 and 522

- Surveys beginning on or around May 22nd
- Initial vessels on survey:
 - MV Neptune
 - MV Gerry Bordelon
- Other vessels to be deployed later, notifications to be made at that time
- Survey will gather data on seabed and subfloor conditions
- Seeking contact with fishermen who are or may be working in the survey area



RECREATIONAL FISHERIES

- Limited information to support quantifying impacts to recreational fisheries, if any
- Evidence that some types of recreational fisheries may benefit
- Lack of specific information / data to quantify impacts
- Vineyard Wind organizing research regarding large pelagics
- Meanwhile, Vineyard Wind proposing to allow recreational fishing businesses to be eligible for direct compensatory mitigation fund

MITIGATION PAID TO TWO FUNDS

Direct compensation fund:

- Funding amount based on average annual value of Massachusetts landings of all species from the project area, estimated to be \$196,621/year
- For compensation of direct losses (gear loss, lost revenue, etc)
- Funds held in escrow (trust)
- Requirements for receiving compensation payment established by a panel of fishermen, regulators, and Vineyard Wind
- Claims evaluated and paid by an independent administrator
- This is a typical arrangement for other types of compensatory programs

Innovation fund:

- Funding additional to direct compensation amount
- Funds programs and projects to ensure safe, profitable fishery future alongside offshore wind
- Held by state agency or a separate trust from the direct compensation escrow account
- Vineyard Wind will not be involved in determining how funds are deployed

PAYMENT MECHANISM

Direct Compensation Fund

- Annual payment to fund:
 - \$ 196,621 per year, inflated 2.5% each year
 - First year front-loaded X 2 (\$393,242)
 - 30 years of payment
- Starting in 2019: year before in-water construction starts

Innovation Fund

- Annual payment to fund:
 - \$100,000 per year, inflated 2.5% each year
 - First year front-loaded X 2 (\$200,000)
 - 10 years of payment
- Every year after first, unused Direct Compensation funds in excess of \$196,621 are moved to Innovation Fund

Total proposal value: \$10,049,153