



VINEYARD WIND

Rhode Island Marine Fisheries Council Meeting

August 30, 2018

Vineyard Wind lease area selected through multiyear stakeholder process

2010 - On-going: Stakeholder Task Force

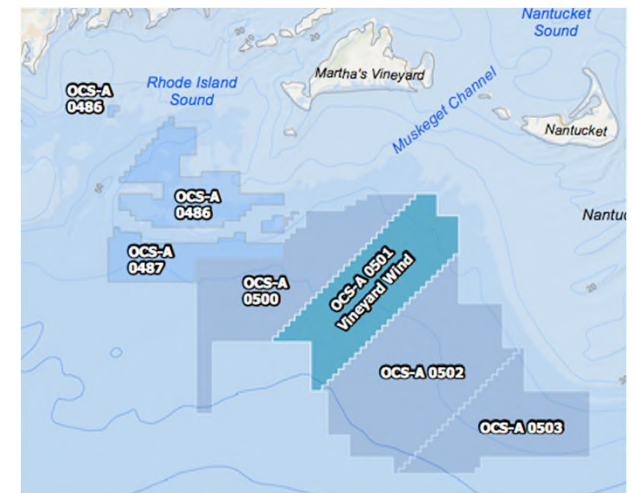
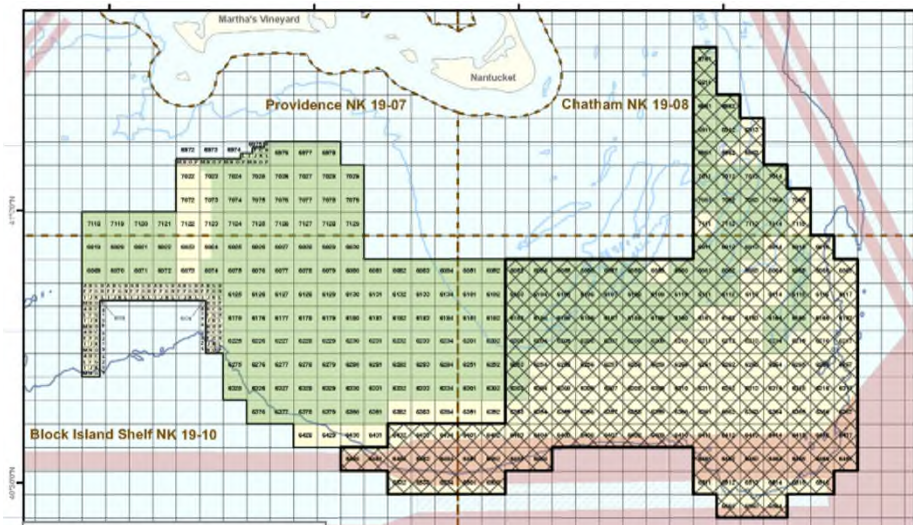
- Joint RI/MA meetings
- Multiple stakeholder meetings
- Habitat and fisheries working groups

2012 – On-going: BOEM/MA funded environmental surveys

2015: Auction and Lease issuance

2017: Vineyard Wind first developer to submit COP

Through out this period Vineyard Wind consulted with RI and MA fishermen

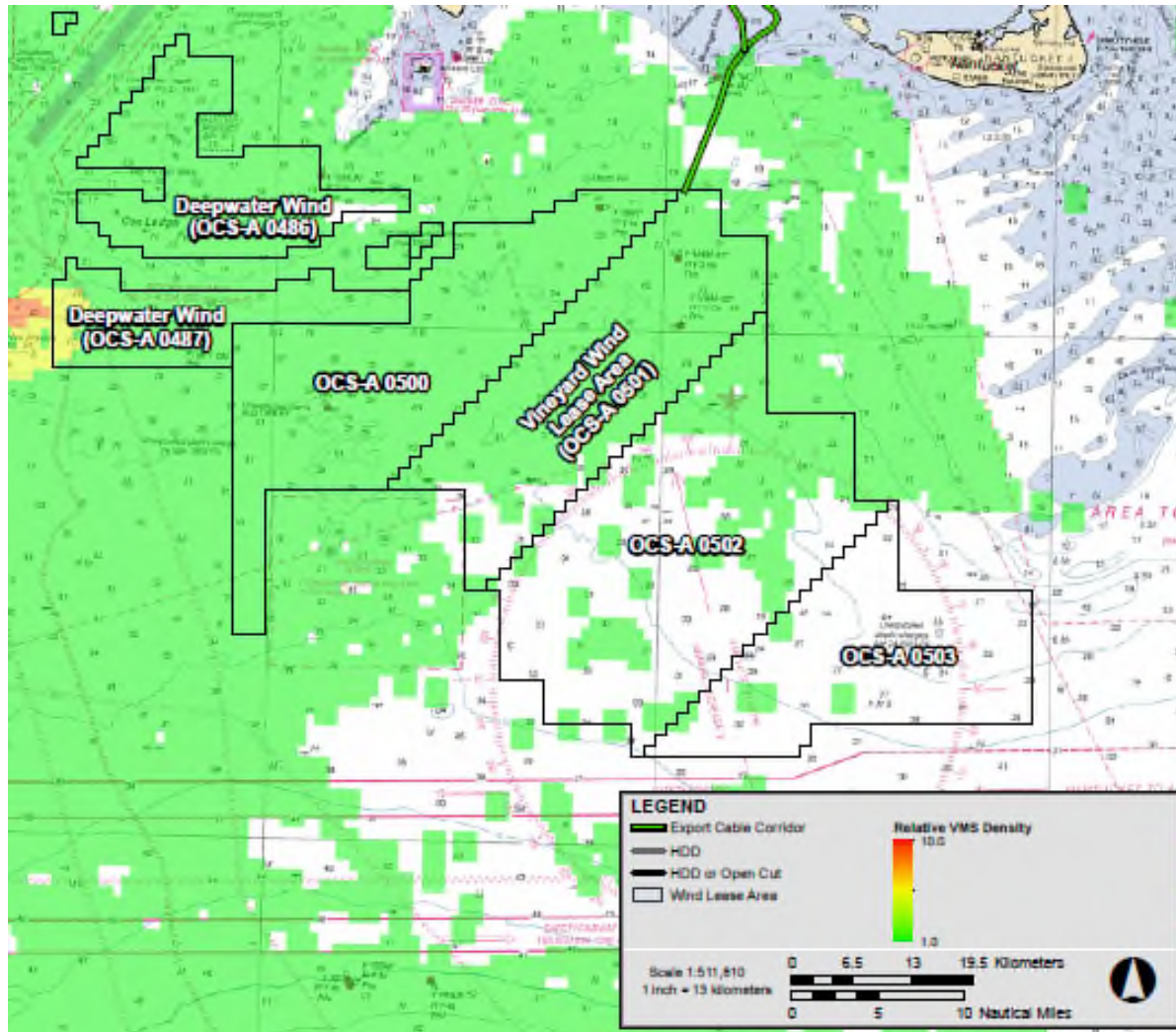


August 2018

Outreach and engagement with RI Fisheries

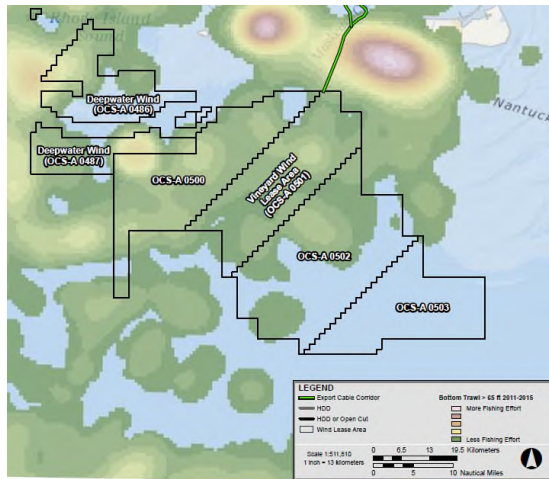
- **First meeting with RI fishermen in 2011**
 - Vineyard Wind engaged the first Fishermen Representative in US in 2010
- **Over 40 meetings with RI fishermen / fishing organizations**
- **Vineyard Wind has presented at three FAB meetings**
 - July 24, 2017
 - February 19, 2018 (participated/available)
 - April 11, 2018
 - July 26, 2018
 - Also meetings with individual FAB members
- **DEM Study: Livermore, 2017**
 - Worked closely with PI when report first released
 - First offshore wind project to cite study in permit application (our COP)

Fisheries data: Vineyard Wind Lease Area

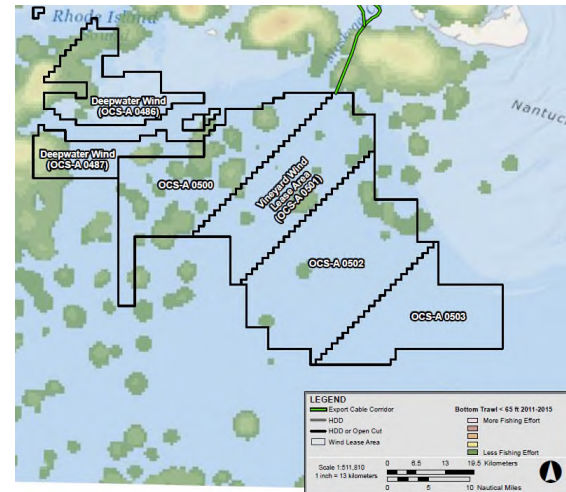


Fisheries data: Vineyard Wind Lease Area

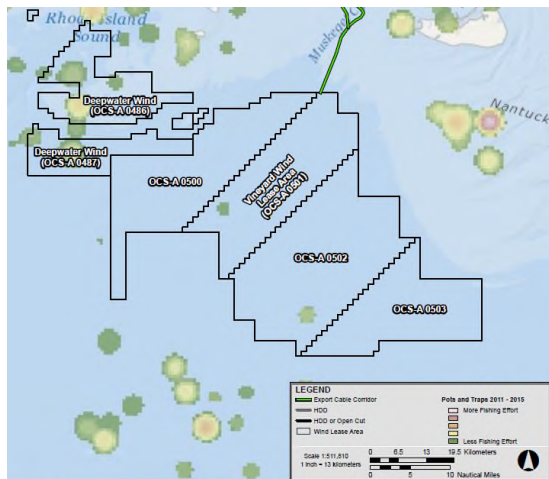
Bottom trawl > 65 ft 2011-2015



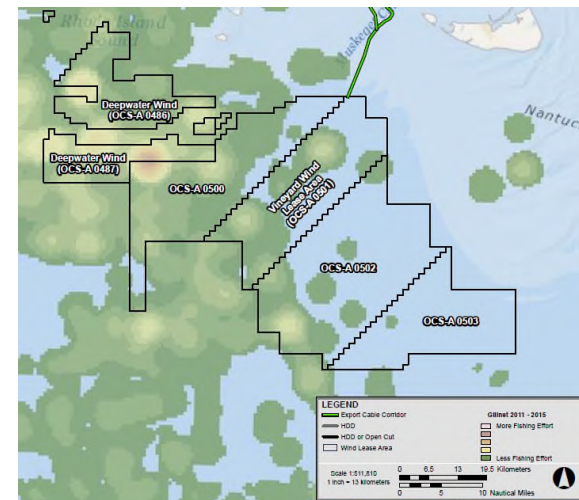
Bottom trawl < 65 ft 2011-2015



Pots and Traps 2011-2015

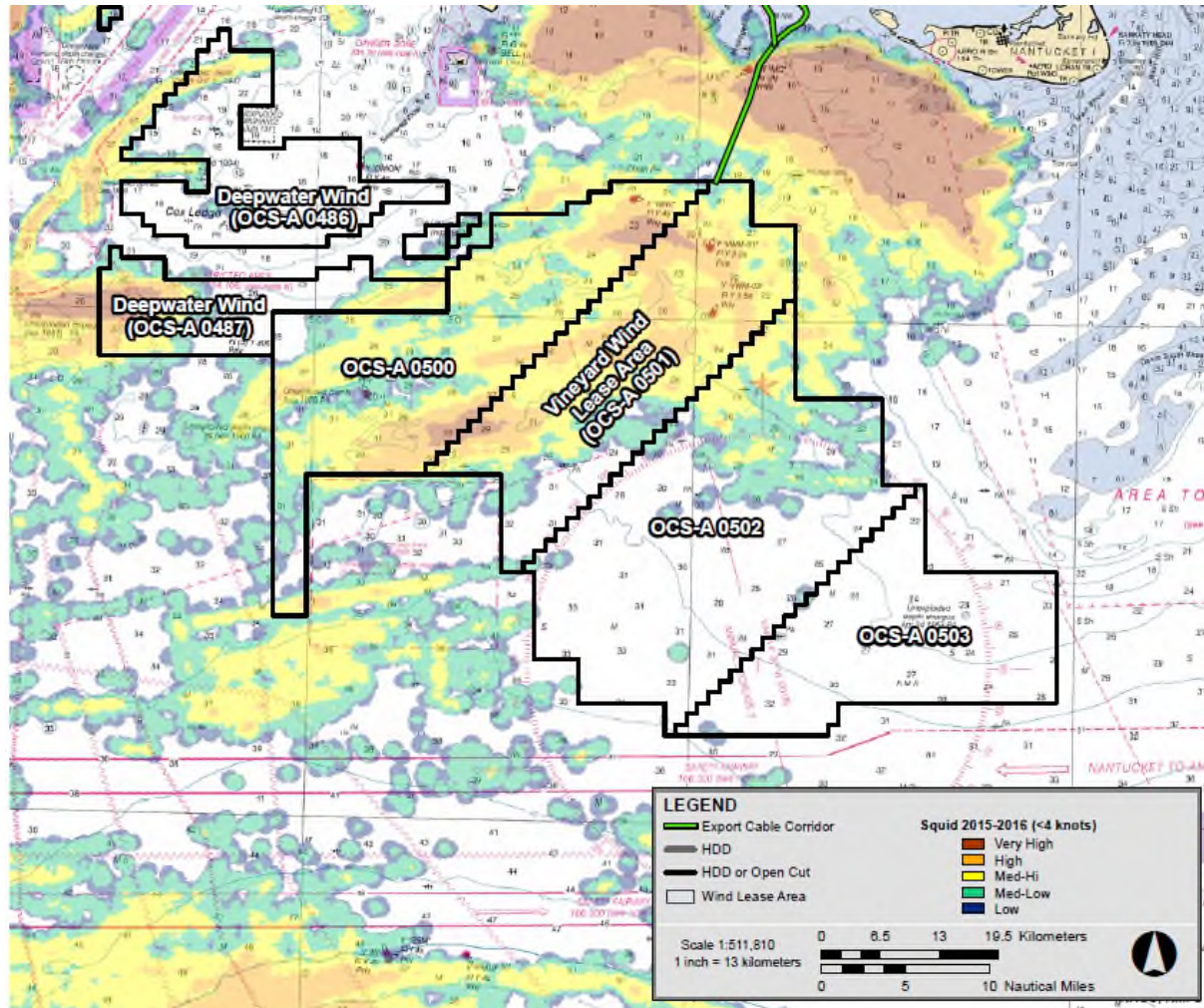


Gill net 2011-2015



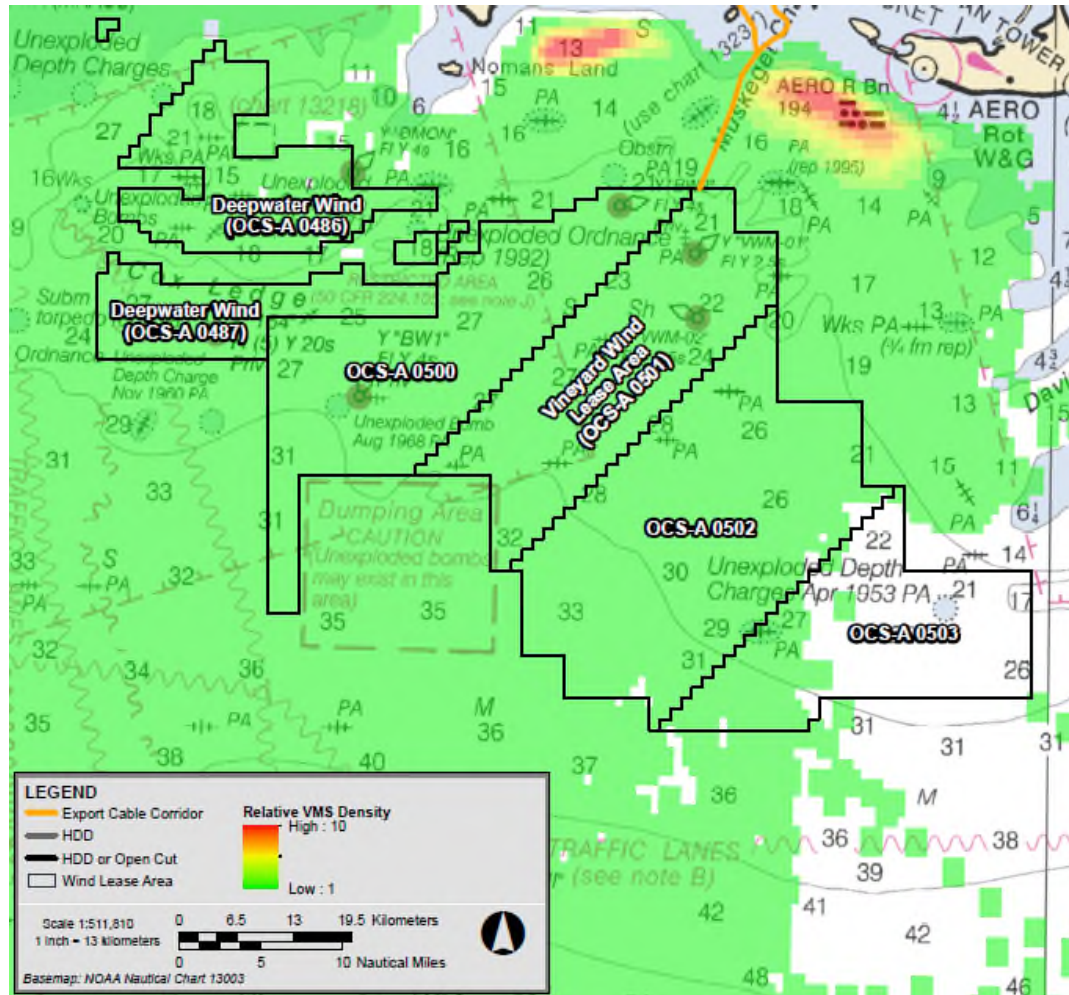
Data source: MARCO – Mid-Atlantic Regional Council on the Ocean, VTR data

Fisheries data: Vineyard Wind Lease Area



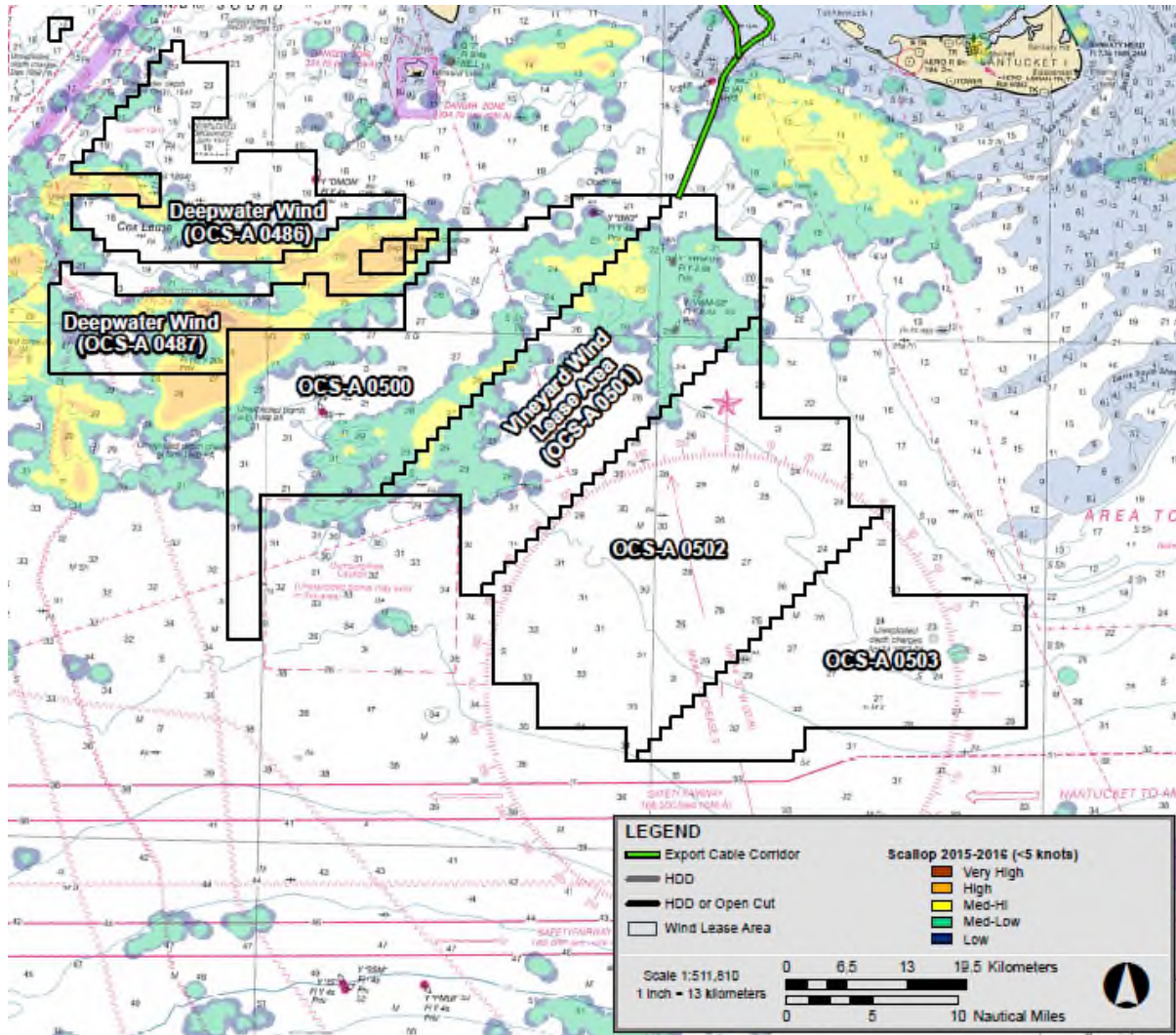
Data source: Northeast Ocean Data Portal , VMS 2015-2016

Fisheries data: Vineyard Wind Lease Area



Data source: RI DEM, 2017: 2011 – 2016 Squid, Mackerel, Butterfish

Fishery data: Vineyard Wind Lease Area



Data source: Northeast Ocean Data Portal , VMS 2015-2016

On-going Rhode Island fishery data collection

Working with Rhode Island DEM :

- Plot squid VMS data by season and management trimesters
- Separate squid fishing density maps from mackerel and butterfish

Working with Rhode Island Fishermen:

- Collect individual vessel track data through WindPlot
- Collect EVTR and study fleet data to better represent fishing activity in the lease areas

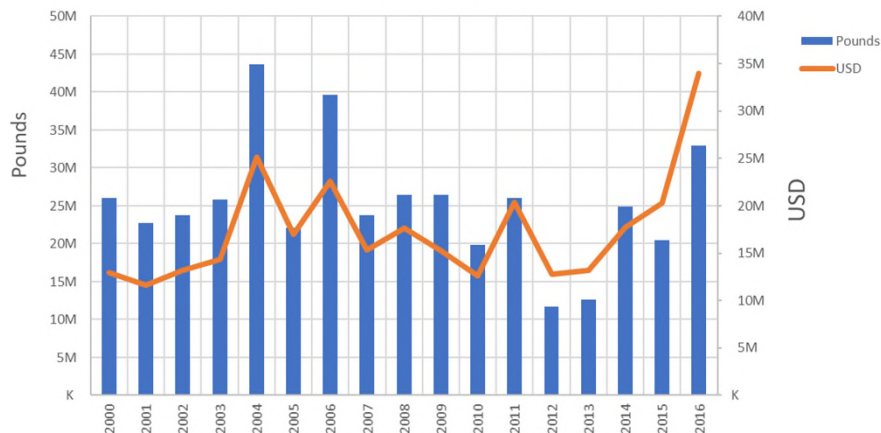
Working with NOAA:

- Obtain more specific lobster, squid, and whiting data from within lease area through VTR
- Separate VMS data to look for vessels just transiting (>4 knots) in transit area

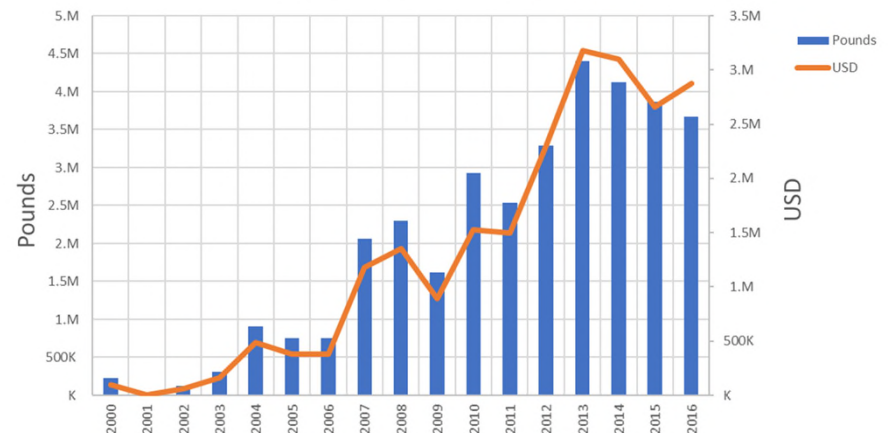
We have learned a lot about RI fishing industry

- Most important species by dollar value is squid
- Variable year-to-year landings in dollars and pounds
 - Consistent fishery, increase in revenue since 2012
- Jonah Crab landings and revenue are increasing and becoming more valuable
 - Consistent with other fishing ports
 - Suggests change in habitat or other factors

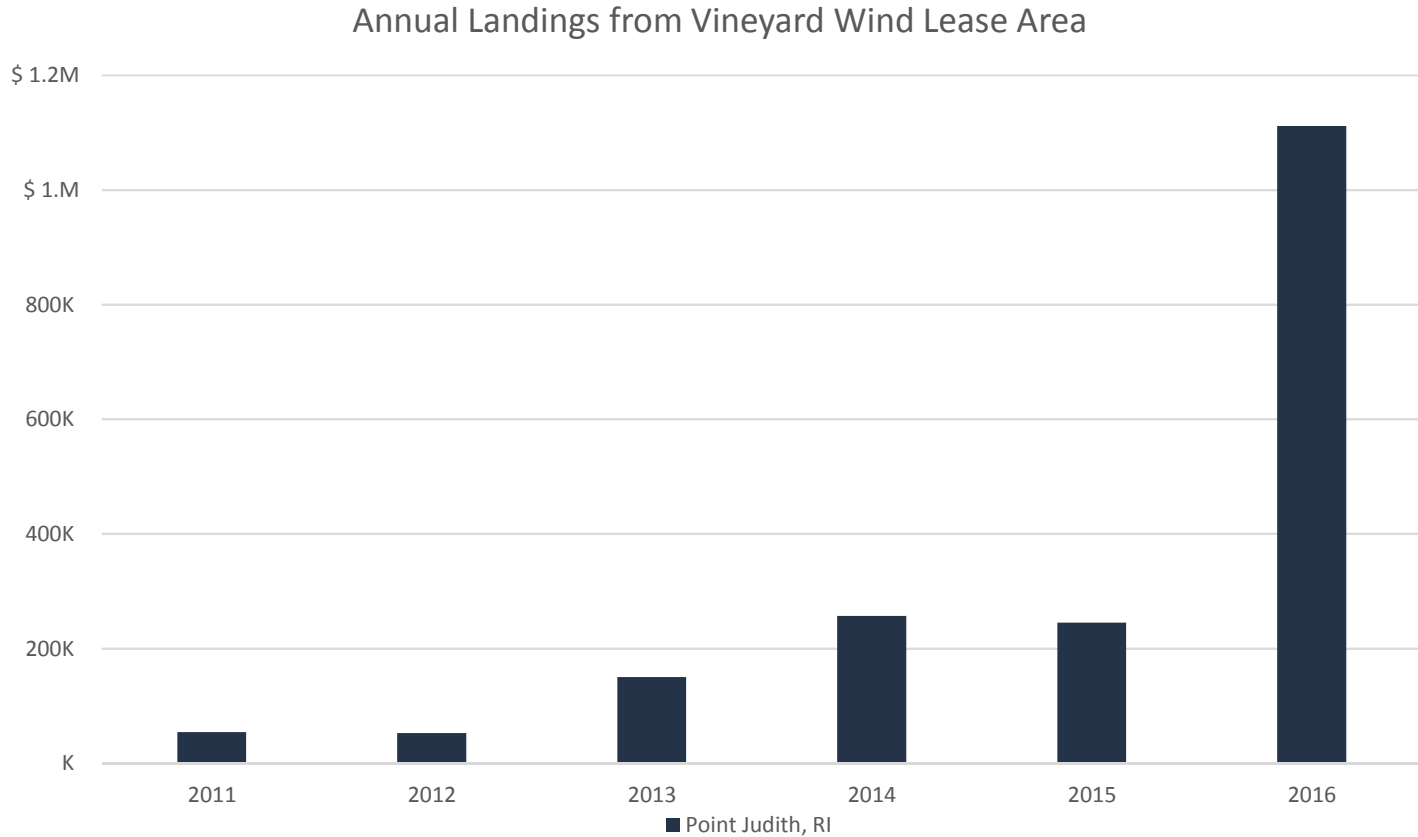
Annual Squid Landings



Annual Jonah Crab Landings

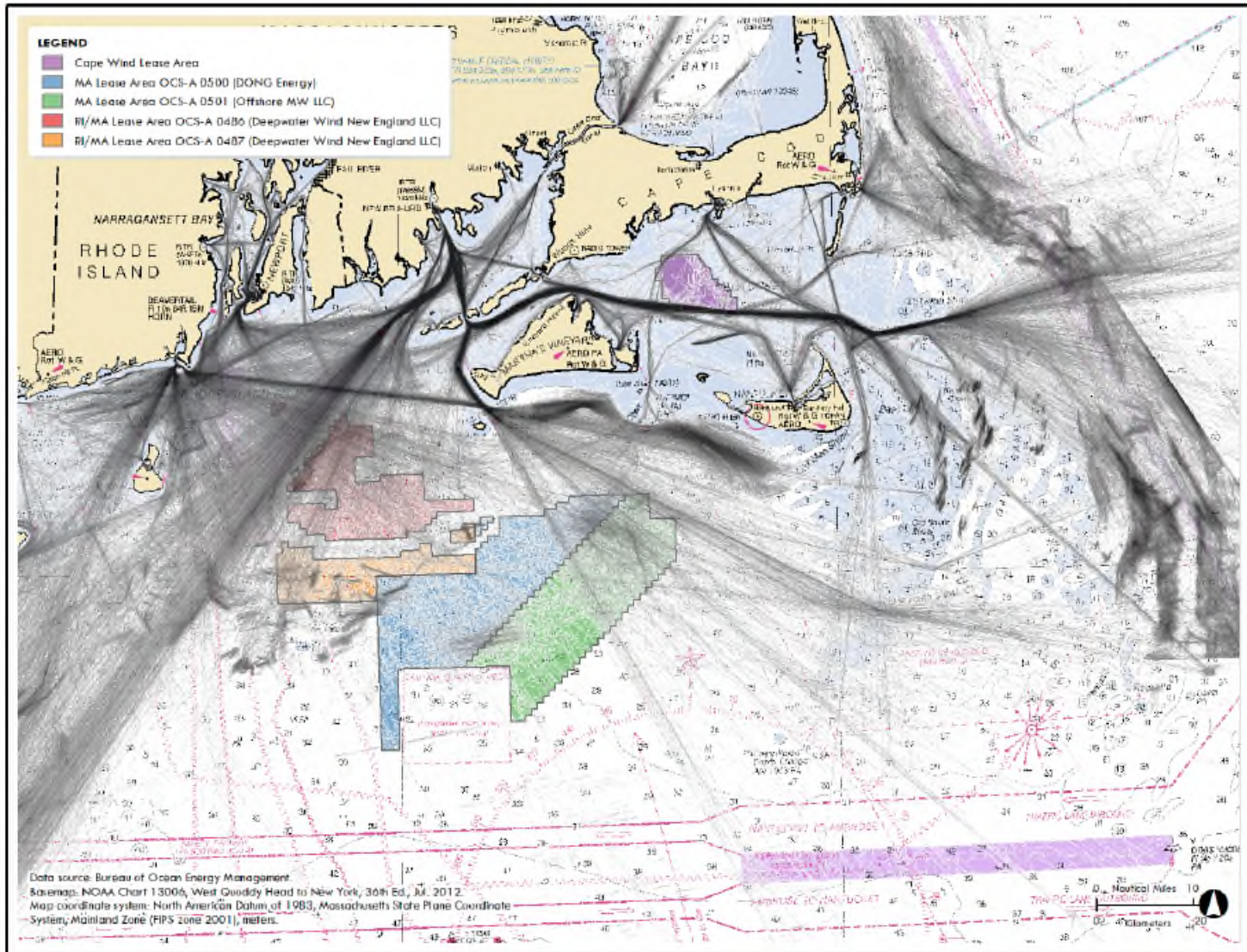


Fishing in Vineyard Wind lease area



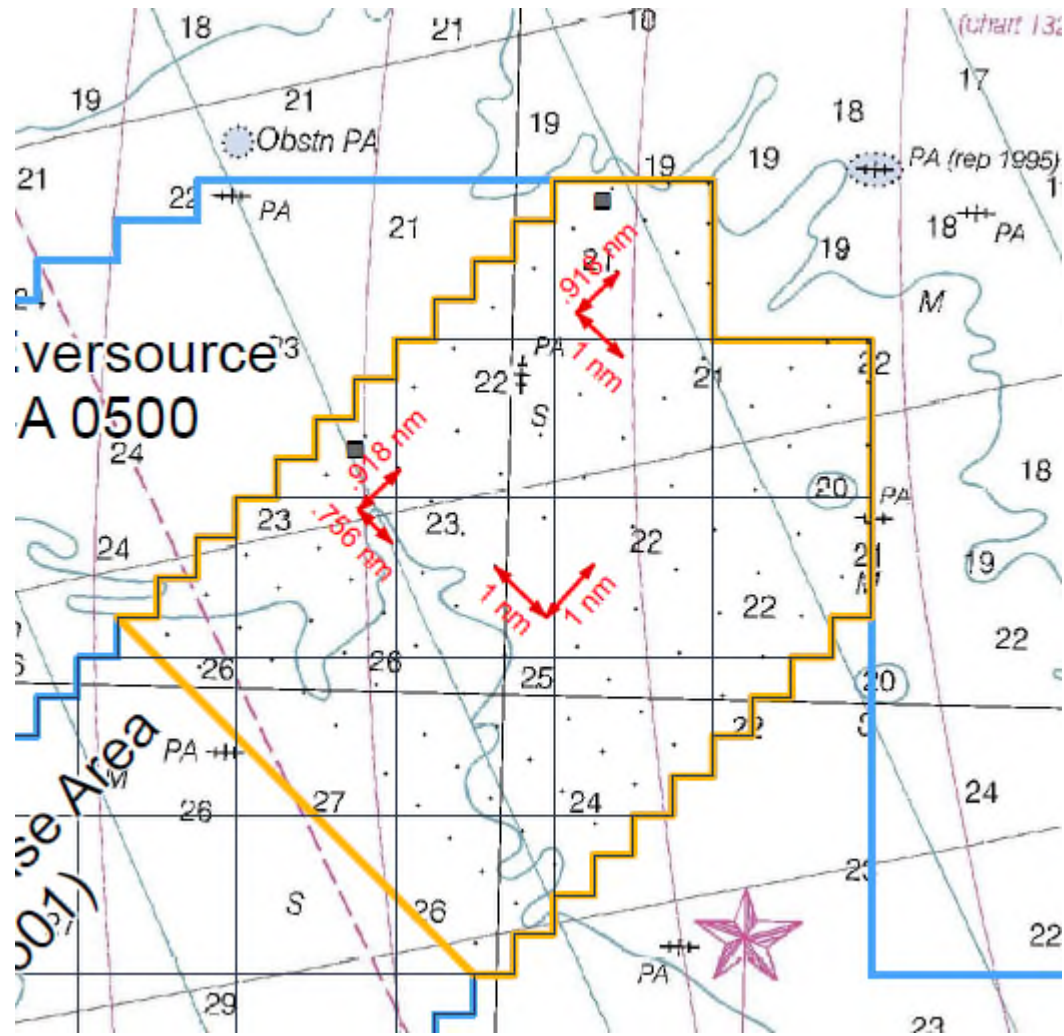
Data source: RI DEM, Livermore 2017: Table 11

Why is our current lay-out designed as is?



2016 AIS DATA of Fishing Vessels (< 65 feet under represented)

Vineyard Wind's proposed lay-out intended to accommodate **both** fishing in area and transit by fishermen



Vineyard Wind is proposing the lowest density project in the world in order to accommodate fishing¹

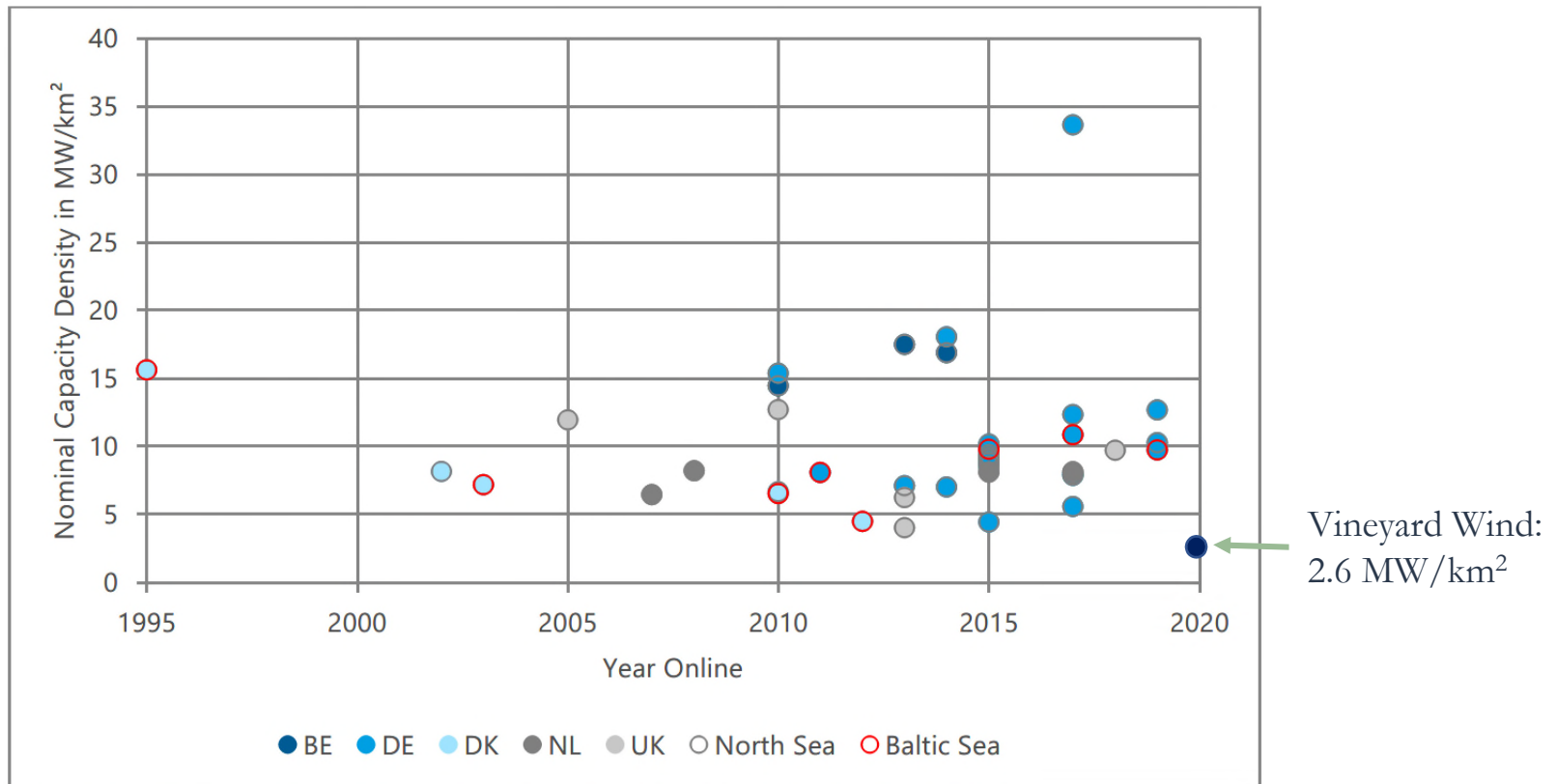
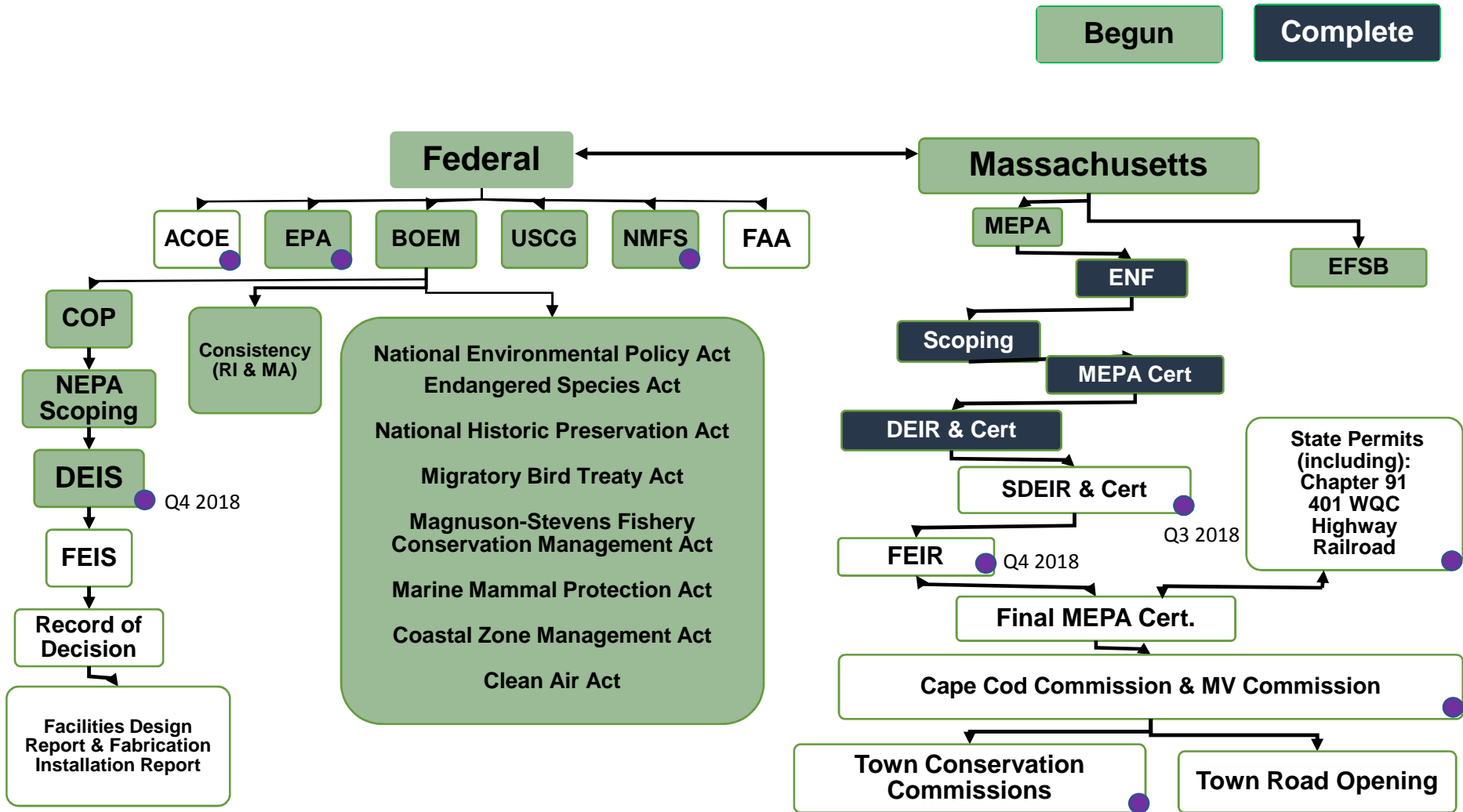


Figure 4:
Nominal capacity densities of European offshore wind farms

1: Based on comparison to projects analyzed "Capacity Densities of European Offshore Wind Farms", Deutsche WindGuard, 2018

PERMITTING PROCESS



● Upcoming Public Comment Period

Consultation with RI Fishermen

- **Vineyard Wind is in conversations with RI Fishermen, CRMC, BOEM, USCG, MA CZM, and others**
- **Continue to collect available data**
 - In particular, raw WindPlot data, Study Fleet, and EVTR data
 - Developing list of all RI fishermen who fish in lease area
 - Pre-construction study starting
- **Vineyard Wind wants to accommodate E-W request as much as possible within constraints:**
 - Selected by Massachusetts to deliver 800MW of offshore wind at a set price and by a set date (2022)
 - Permit review process requires long-lead decisions and little-to-no flexibility once underway
 - Many competing interests, including among fishermen
 - The currently proposed lay-out continues to stand up as a good one when integrating all concerns / data
- **Options being considered:**
 - Use “spare” turbine locations to better accommodate E-W layout
 - Possibly move a limited number of turbine locations