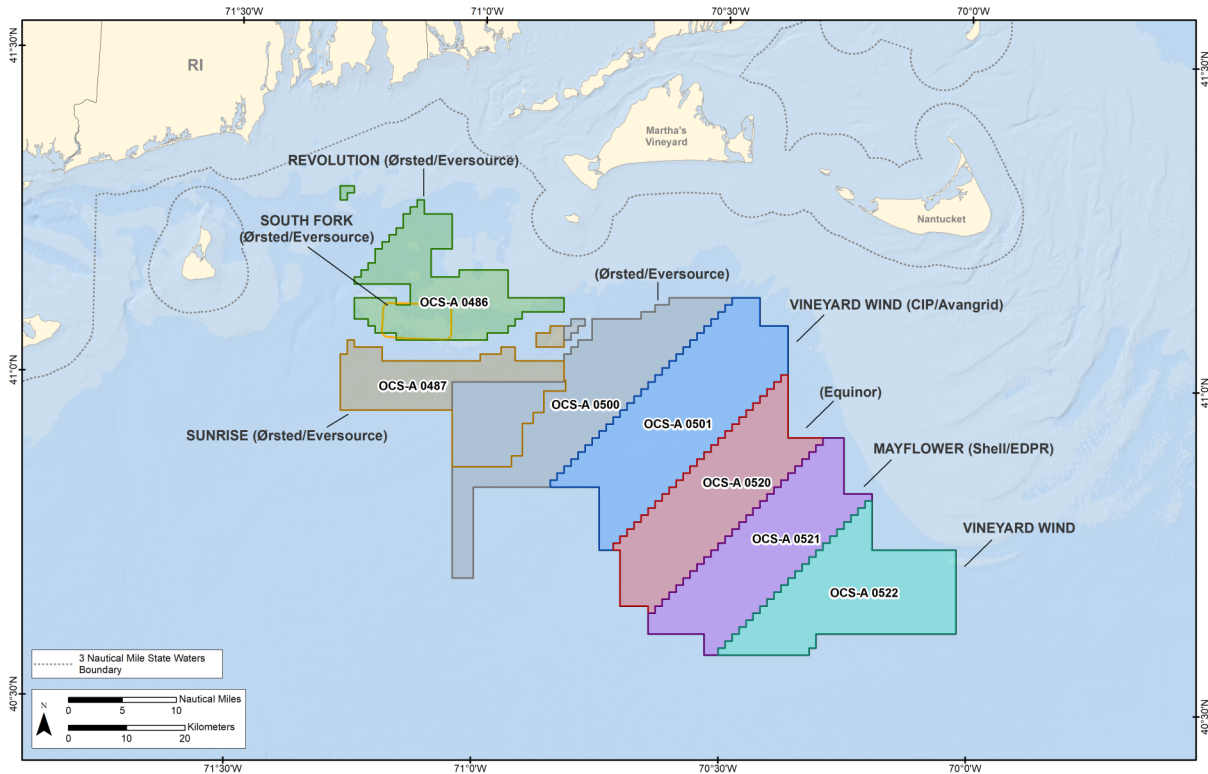


ANNOUNCING MONTHLY PORT HOURS

with Fisheries Liaisons from the RI/MA Wind Energy Areas



Beginning January 2020, Equinor, Ørsted, Mayflower Wind, and Vineyard Wind fisheries liaisons will be available during port hours for commercial and recreational fishing inquiries, comments and feedback for the RI/MA Wind Energy Areas.

Please stop by for informal conversation at the following scheduled times and locations:

Point Judith conference room above Superior Trawl
55 State Street Narragansett, RI 02882
First Thursday of every month
8am - 12 pm
Jan. 2, Feb. 6, Mar. 5, Apr. 2, May 7, Jun. 4

New Bedford Port Authority
52 Fishermen's Wharf New Bedford, MA 02740
First Friday of every month
8am - 12 pm
Jan. 3, Feb. 7, Mar. 6, Apr. 3, May 8, Jun.5

Questions regarding the monthly port hours please contact fisheries liaisons at:

Elizabeth Marchetti	Ruth Perry	Rodney Avila	Chris Sarro	Crista Bank	Caela Howard
Equinor	Mayflower	Ørsted	Ørsted	Vineyard Wind	Vineyard Wind
401.954.2902	346.410.9355	508.889.0402	508.245.7924	508.525.0421	860.575.3501