

2021-November-30 NAD83 UTM Zone 19 North (2011)  
 BASEMAP: NOAA Chart 12300

0 4 8 NM  
 0 5 10 km

OCS-A 0501 MASS USA

**VINEYARD WIND**

**Lobster Management Area 6**

**Lobster Management Area 1 E**

**Outer Cape Lobster Management Area**

**Lobster Management Area 2**

**Revolution Wind (Orsted/Eversource)**

**South Fork (Orsted/Eversource)**

**Sunrise Wind (Orsted/Eversource)**

**Bay State Wind (Orsted/Eversource)**

**New England Wind (Atrangrid Renewables)**

**Beacon Wind (Equinor/Bp)**

**Vineyard Wind 1**

**Mayflower Wind (Shell/EDP Renewables)**

**OCS-A-522 (Copenhagen Infrastructure Partners)**

- Vineyard Wind 1 Turbines
- OCS-A 0501
- Proposed positions on a 1 nm x 1 nm grid

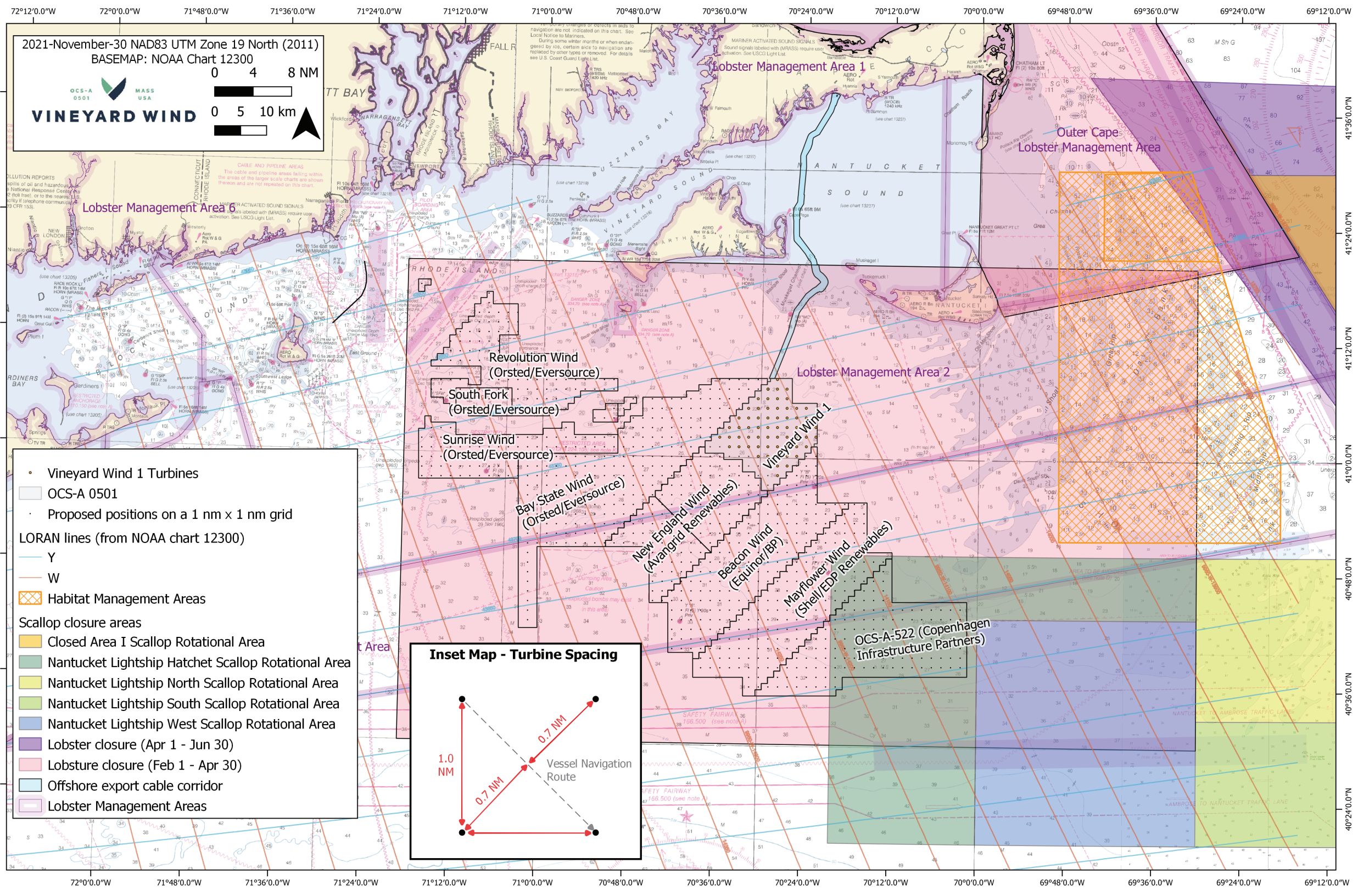
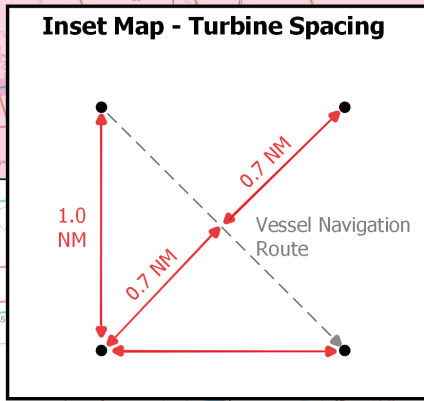
LORAN lines (from NOAA chart 12300)

- Y
- W

Habitat Management Areas

Scallop closure areas

- Closed Area I Scallop Rotational Area
- Nantucket Lightship Hatchet Scallop Rotational Area
- Nantucket Lightship North Scallop Rotational Area
- Nantucket Lightship South Scallop Rotational Area
- Nantucket Lightship West Scallop Rotational Area
- Lobster closure (Apr 1 - Jun 30)
- Lobsture closure (Feb 1 - Apr 30)
- Offshore export cable corridor
- Lobster Management Areas



OCS-A  
0501



MASS  
USA

# VINEYARD WIND

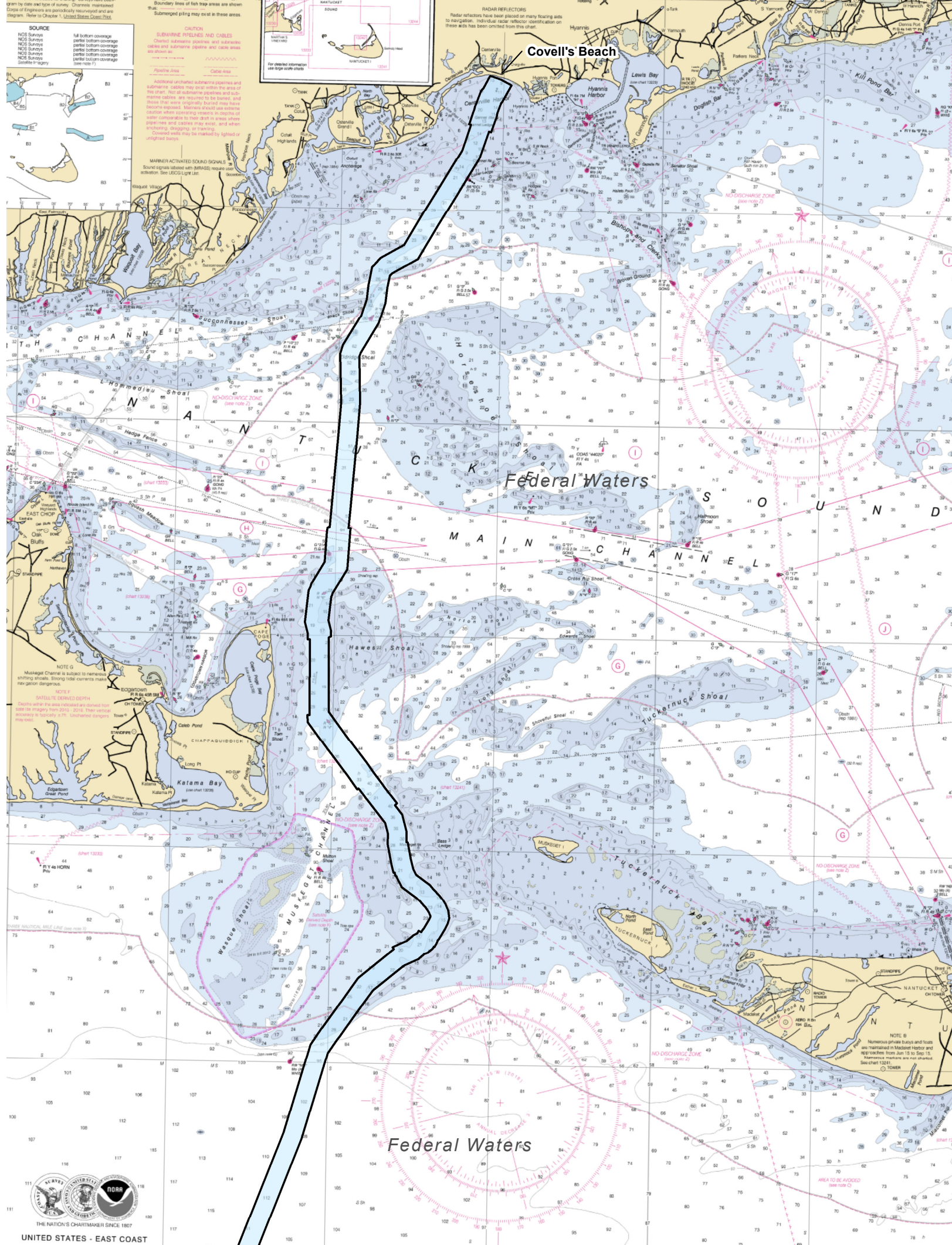
**Contact our Fisheries Manager:**

Crista Bank

[cbank@vineyardwind.com](mailto:cbank@vineyardwind.com)

508-525-0421





**CAUTION**  
 SURROUNDING PIPES AND CABLES  
 CHAINED SUBMERGED PIPES AND CABLES  
 CHAINED SUBMERGED PIPES AND CABLES ARE LOCATED IN THESE AREAS.  
 ADDITIONAL CHAINED SUBMERGED PIPES AND CABLES MAY BE LOCATED WITHIN THE AREA OF THIS CHART. FOR ALL SUBMERGED PIPES AND CABLES, PREPARATION AND MAINTENANCE ARE REQUIRED TO BE MAINTAINED, AND MAINTENANCE ACTIVITIES MAY BE REQUIRED TO BE MAINTAINED. THESE ACTIVITIES MAY BE REQUIRED TO BE MAINTAINED IN DEPTH OF WATER COMPATIBLE WITH THESE DEPTHS TO AVOID COLLISIONS AND CABLES MAY BE DAMAGED OR DISRUPTED. THESE DEPTHS MAY BE MARKED BY LIGHTS OR UNUSUAL COLORS.

**CAUTION**  
 ADDITIONAL CHAINED SUBMERGED PIPES AND CABLES MAY BE LOCATED WITHIN THE AREA OF THIS CHART. FOR ALL SUBMERGED PIPES AND CABLES, PREPARATION AND MAINTENANCE ARE REQUIRED TO BE MAINTAINED, AND MAINTENANCE ACTIVITIES MAY BE REQUIRED TO BE MAINTAINED. THESE ACTIVITIES MAY BE REQUIRED TO BE MAINTAINED IN DEPTH OF WATER COMPATIBLE WITH THESE DEPTHS TO AVOID COLLISIONS AND CABLES MAY BE DAMAGED OR DISRUPTED. THESE DEPTHS MAY BE MARKED BY LIGHTS OR UNUSUAL COLORS.

**MARINER ACTIVATED SOUND SIGNALS**  
 Sound signals (shown with MRLS) require user activation. See USCG Light List.

**NOTE G**  
 Muskeget Channel is subject to numerous shifting shoals. Strong tidal currents may create navigation dangers.

**NOTE F**  
 SATellite DERIVED DEPTH  
 Depths within the area indicated are derived from satellite imagery from 2010 to 2016. Their vertical accuracy is typically ± 7%. Uncharted dangers may exist.



**T SOUND AND APPROACHES**

Mercator Projection  
 Scale 1:50,000 at Lat. 41°25'  
 North American Datum of 1983  
 (World Geodetic System 1984)  
 SOUNDINGS IN FEET  
 AT MEAN LOWER LOW WATER

**OCS-A 0501**

**LEGEND**

- Offshore Export Cable Corridor (OECC)
- Vineyard Wind Lease Area

Scale 1:158,400 0 1.25 2.5 Miles  
 1 inch = 2.5 miles

Basemap: Nautical Chart 13237, NOAA

This product is for informational purposes and may not be suitable for legal, engineering, or surveying purposes.

OCS-A  
0501



MASS  
USA

# VINEYARD WIND

**Contact our Fisheries Manager:**

Crista Bank

[cbank@vineyardwind.com](mailto:cbank@vineyardwind.com)

508-525-0421