

Fisheries Communications Plan

Rev. 10

Vineyard Wind 1 LLC

Document Title:	Fisheries Communications Plan
Company	Vineyard Wind 1 LLC
Date:	3/20/2023
Document Type:	Plan
Revision:	10
Previous versions:	Rev. 1 – September 2016 Rev. 2 – October 2017 Rev. 3 – November 2017 Rev. 4 – December 2017 Rev. 5 – March 2018 Rev. 6 – June 2018 Rev. 7 – January 2019 Rev. 8 – August 2019 Rev. 9 – March 2020 Rev. 10 – March 2023
Authors:	Crista Bank

Vineyard Wind 1 Fisheries Communication Plan

Revised March 2023

I. Introduction

This Fisheries Communication Plan (FCP) guides Vineyard Wind 1 LLC's (Vineyard Wind's) communication with fishermen potentially affected by the construction and operation of the Vineyard Wind 1 project ("Vineyard Wind 1" or the "Project"), the nation's first commercial-scale offshore wind project. This FCP is a living document that has evolved to reflect lessons learned and feedback from fishermen, fishing organizations, and regulatory agencies. Vineyard Wind strongly believes that increased participation from the fishing industry in the development, construction, and operation of offshore wind projects helps reduce user conflict, improves project design, and results in a better understanding between the two fishing and offshore wind industries.

To receive updated versions of this FCP as they become available or to submit suggestions on how to improve fisheries communication, please send an email to fisheries@vineyardwind.com. Visit www.vineyardwind.com/fisheries to sign-up for updates, Notices to Mariners, and information requests as well as to access charts, FAQs, and completed fisheries science reports.

II. Vineyard Wind 1

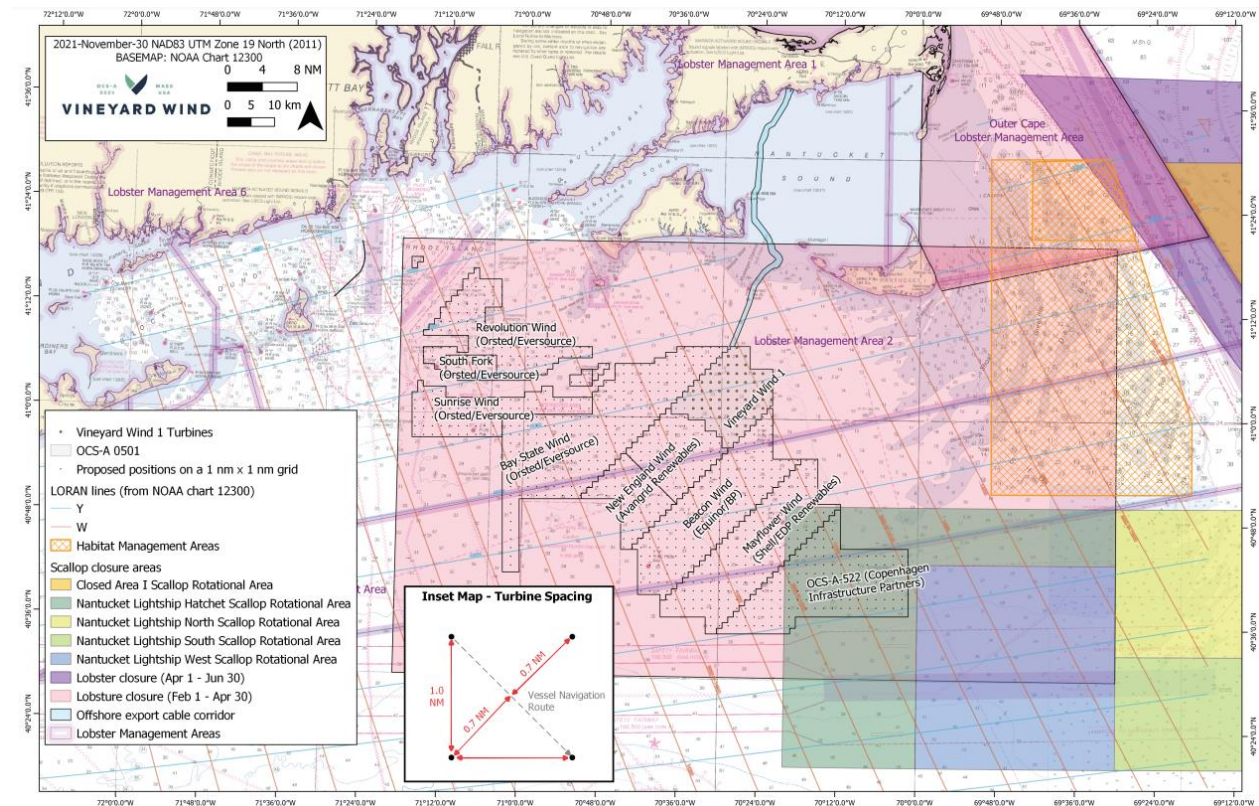
Vineyard Wind 1 is an 800 MW offshore wind generation facility that will be installed in Lease Area OCS-A 0501 (see Figure 1). The Project was awarded long-term contracts with the Massachusetts electric distribution companies in May 2018 and will be the first commercial-scale offshore wind project in the US. Once operational, the project will generate clean, renewable, cost-competitive energy for over 400,000 homes and businesses across the Commonwealth, while reducing carbon emissions by over 1.6 million tons per year. Vineyard Wind 1 is now in the construction phase and is expected to achieve commercial operation in 2024.

Lease Area OCS-A 0501 is located approximately 12.4 nautical miles (nmi) from the southeast corner of Martha's Vineyard and a similar distance from the southwest side of Nantucket. The lease area covers approximately 102 square miles. Water depths in the lease area gradually increase as the distance from land increases, ranging from about 118 to 164 feet (approximately 20 – 27 fathoms) based on the NAVD88 vertical datum.

Lease Area OCS-A 0501 is located in the Massachusetts Wind Energy Area (MA WEA). The MA WEA was designated by the Bureau of Ocean Energy Management (BOEM), with significant stakeholder input, including the BOEM Massachusetts Renewable Energy Taskforce (made up of local and state elected officials in Massachusetts and Rhode Island), the Massachusetts Fisheries Working Group on Offshore Wind

Energy (FWG),¹ and the Massachusetts Habitat Working Group on Offshore Wind Energy (HWG)² to minimize and avoid impacts to the marine environment. For example, after considering stakeholder comments, BOEM modified the MA WEA to exclude an area of high fisheries value to reduce potential conflicts with commercial and recreational fishing activities. Siting choices such as these were considered to minimize and avoid potential impacts to fisheries and environmental resources from offshore wind development on the Outer Continental Shelf (OCS).

Figure 1. Lease Area OCS-A 0501's location in the MA WEA

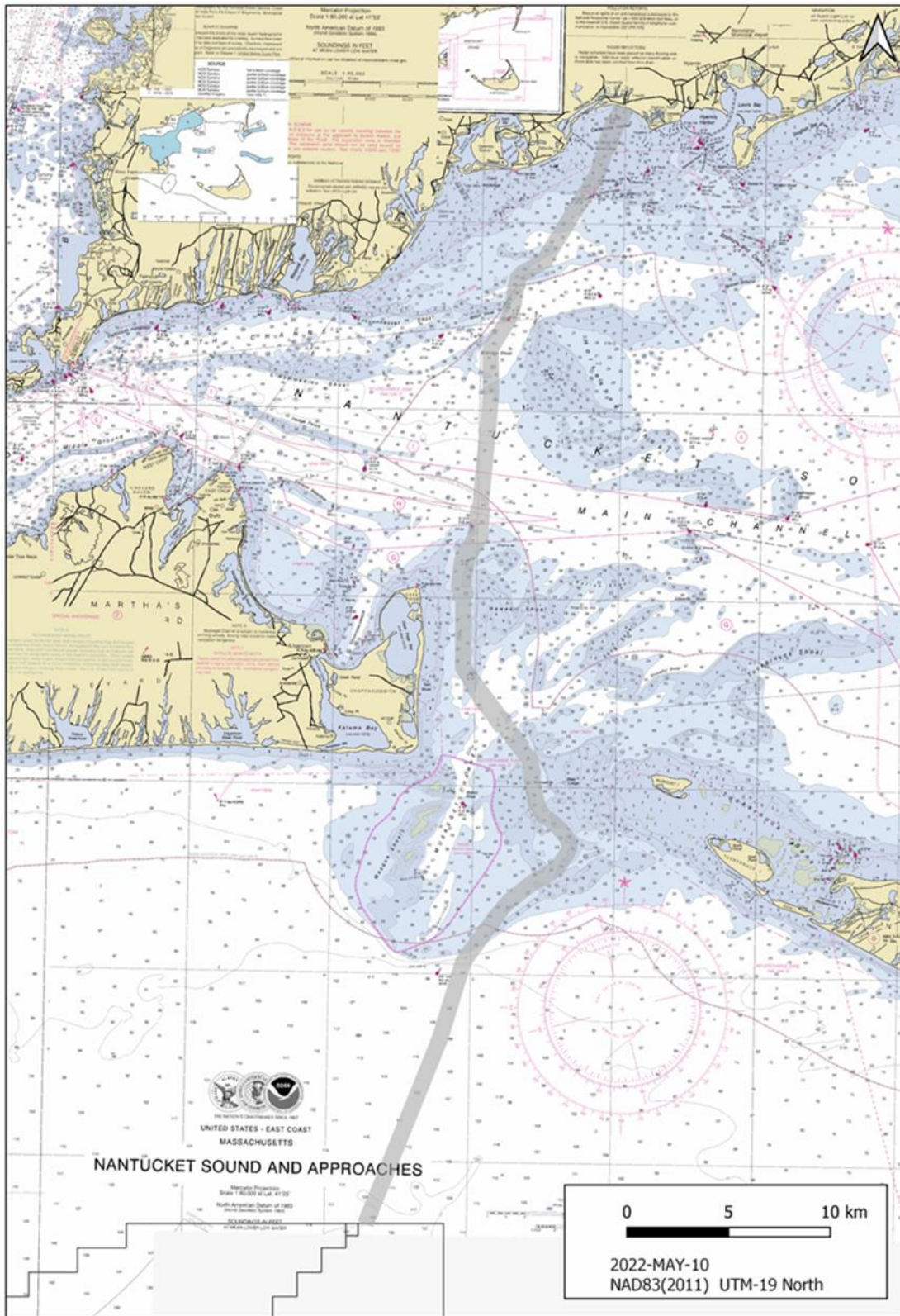


Vineyard Wind 1 will deliver its power to the shore through two offshore export cables installed below the seafloor in an offshore export cable corridor (OEC). The OEC travels north from Lease Area OCS-A 0501 and through Muskeget Channel where it turns west and makes landfall at the Covell's Beach landfill site in Barnstable, Massachusetts (see Figure 2). The OEC is approximately 34.8 nmi in length, with approximately 14.3 nmi passing through federal waters and 20.4 nmi passing through Massachusetts state waters.

¹ The FWG is a voluntary, informal working group comprised of commercial fishermen and representatives from different ports and sectors, recreational fishermen, scientists, and state and federal agencies. The FWG, which was convened by the Commonwealth of Massachusetts, continues to meet and engage in offshore wind issues.

² The HWG is a voluntary, informal working group comprised of scientists and technical experts from environmental organizations, academia, and state and federal agencies. Early meetings addressed issues such as marine mammal and avian use of the potential offshore wind areas. The HWG, which was convened by the Commonwealth of Massachusetts, continues to meet and engage in offshore wind issues.

Figure 2. Vineyard Wind 1 OECC



IV. Fisheries Team

Fisheries communication activities are led by a Fisheries Manager, who serves as the Fisheries Liaison (FL) for Vineyard Wind 1, in coordination with our Fisheries Representatives (FRs) and other members of the fisheries team (e.g., Offshore Fisheries Liaisons [OFLs] and scout vessels). These roles are further described below. Vineyard Wind also employs a Marine Operations Officer (MOO), sometimes referred to as the Marine Operations Liaison Officer, who is responsible for safe marine operations and ensuring that Vineyard Wind is a good neighbor on the water.

In 2023, Vineyard Wind hired a Marine Coordinator to manage all construction vessel logistics and act as a liaison with the U.S. Coast Guard (USCG), port authorities, state and local law enforcement, marine patrol, and port operators. The Marine Coordinator will keep informed of all planned vessel deployments and will manage marine logistics and vessel traffic coordination between the staging ports and Lease Area OCS-A 0501 in federal waters.

Contact information for the Project's FL, FRs, and MOO is available online at www.vineyardwind.com/fisheries. The FL is available by phone, email, text, and through our website for ongoing communication. Additionally, fishermen can fill out a form on our website to share their contact information and concerns. The form is sent directly to the FL's email, and a follow-up phone call and/or email is made shortly after receipt of the contact information.

Fisheries Liaison Role

The FL is employed by Vineyard Wind and reports directly to the Director of Environmental Affairs who, in turn, reports to the Chief Development Officer. The FL is responsible for the overall implementation of this FCP and facilitating communication between the fishing industry and Vineyard Wind. The FL seeks to:

- develop relationships and direct lines of communication with individuals that are representative of potentially impacted fishing regions, industries, and communities;
- understand and convey current fishing industry concerns and feedback to Vineyard Wind to identify and work towards solutions;
- maintain existing working relationships with FRs, and identify and engage new FRs;
- identify potentially affected fisheries and develop communication methods and tools to create two-way communication channels;
- work with scientists, agencies, and fisheries stakeholders to develop monitoring plans for fish species and habitats of concern; and
- ensure work opportunities on the Project for the fishing industry.

Fisheries Representative Role

FRs do not work on behalf of Vineyard Wind or the Project, but they represent a particular fishing community, organization, gear type, port, region, state, or sector(s). FRs are responsible for communicating fisheries concerns, issues, and other input to the FL and Vineyard Wind. Typically, the FR is an active fisherman, or group representing active fishermen, within the region, fishery, state, or sector they represent. While FRs are compensated for their time and expenses by Vineyard Wind, their duty is to the fishing region, industry, organization, gear type, or sector they represent. FRs are solicited through a fair and equitable process by the FL who ensures these individuals or organizations adequately and

appropriately represent their respective industry, gear type, port, or region and have the support of the fisheries stakeholders they represent.

Notably, Vineyard Wind was the first US offshore wind developer to engage an FR and today has formal relations with nine FRs who represent a variety of gear types and homeports in Connecticut, Massachusetts, New York, and Rhode Island. Additional information about Vineyard Wind’s FRs is provided in Appendix 1.

Onboard Fisheries Liaison Role

The FL is further supported offshore by onboard fisheries liaisons—referred to as OFLs. OFLs are fishermen employed to assist vessel captains with communication and document fishing gear encountered offshore to help avoid vessel and gear interactions. OFLs are tasked with continuing the role of the FL offshore so that there is effective communication onsite and in real-time. OFLs report to the FL and serve as their “eyes, ears, and voice” during offshore operations. Among other things, the OFL records observed fisheries activities, ensures vessel operations are compliant with company protocols on fisheries engagement and seeks to avoid negative fisheries interactions by looking out for fixed gear, and establishes communications (usually by VHF radio) with fishing vessels when appropriate.

If a gear interaction does occur, the OFL communicates immediately with the FL (or designee), and the FL works shoreside with the relevant FRs or individual fishermen to quickly resolve the matter. Typically, Vineyard Wind contracts with an OFL for the duration of a vessel’s operations, with the OFLs being local fishermen familiar with marine operations and fishing activities in the region. The scout vessels that Vineyard Wind contracts with work in cooperation with OFLs to complete the communication cycle by working alongside and ahead of planned offshore operations, reporting fishing activity back to the vessel, and helping to communicate with fishing vessels active in the area.

V. Fisheries Engagement

Vineyard Wind has met with hundreds of fishermen and fisheries stakeholders in recent years, including fishermen from various gear types and sectors, fishing advocacy organizations, and local fisheries groups who are most likely to be affected by offshore wind development on the OCS. A variety of outreach and engagement approaches are employed to communicate and maintain relationships with fishermen and fisheries stakeholders. These approaches include informal conversations with existing contacts, expanding the company’s network of FRs, attending fishing industry trade events and recreational fishing shows, presenting at commercial and recreational fishing group meetings, and working with the various associations and organizations that represent fishing interests.

Vineyard Wind also utilizes various outreach methods and tools to disseminate relevant information to commercial and recreational fishermen and fisheries stakeholders. These outreach methods and tools include, but are not limited to, the following:

- organizing bi-weekly meetings with FRs to share project information and discuss concerns and current issues facing the fishing industry;
- working with FRs to distribute flyers, charts, FAQs, and other relevant information through their networks and communication channels;
- creating outreach materials for fishing communities to distribute at different events as well as local bait and tackle shops in the region;

- holding “port hours” with FLs from other offshore wind developers at ports in New Bedford, Massachusetts; Narragansett, Rhode Island; Stonington, Connecticut; and Montauk, New York to provide information to fishing vessel crews who fish in or transit through the MA WEA;
- maintaining a website with information specifically for fishermen, including fisheries science information, charts, mariner updates of offshore vessel activity, and vessel Requests for Information (RFI);
- maintaining a database of fishing vessels interested in working in offshore wind and related opportunities, such as participating in fisheries survey activity and scout vessel and guard vessel work;
- reaching out to local recreational fishing organizations and clubs;
- presenting project information and fisheries science updates at recreational organization meetings;
- hosting tables at commercial marine expos and recreational fishing shows;
- engaging with recreational fishing tournaments and derby organizers, including sponsoring events;
- engaging with local recreational fishing experts and influencers with a high social media presence to increase project awareness;
- relying on word of mouth (i.e., reaching out to a fisherman at the request of another fisherman); and
- maintaining a two-way communication channel with expanding network of fishermen through our open-door policy.

Vineyard Wind is also in regular contact with the relevant federal and state agencies on fishery-related matters. We are also a member of and/or active participant in the following technical working groups, advisory boards, councils, and commissions:

- Atlantic States Marine Fisheries Commission
- International Council for the Exploration of the Seas (member of Working Group on Offshore Wind Development and Fisheries)
- Massachusetts Fisheries Working Group on Offshore Wind Energy
- Massachusetts Habitat Working Group on Offshore Wind Energy
- Mid-Atlantic Fishery Management Council
- New England Fishery Management Council
- NYSERDA’s Environmental Technical Working Group
- NYSERDA’s Fisheries Technical Working Group
- Project Advisory Committee for Automated Radio Telemetry at Offshore Wind Farms
- Regional Wildlife Science Collaborative (RWSC)
- Rhode Island Fisheries Advisory Board meetings
- Responsible Offshore Science Alliance (ROSA; Board and Council member)

Vineyard Wind has used its membership and participation in these groups to provide project updates, better understand fisheries and fishermen’s concerns, build relationships, and collaborate on research and education.

Fisheries science is important to fisheries stakeholders, and Vineyard Wind is in regular contact with the research institutions, such as UMass Dartmouth's School for Marine Science & Technology (SMAST) and the New England Aquarium, as well as the fishermen supporting their research efforts. The FL works with the FRs and scientists to identify fish species and habitats that have the potential to be impacted by offshore wind development. Research approaches have been developed to monitor species of concern and document potential changes in species abundance and distribution pre-/during/post-construction. The FL is responsible for implementing this research plan and updating it at least annually or as needed.

Finally, Vineyard Wind understands that some fishermen do not feel adequately represented by fishing organizations or FRs, and therefore prefer to share information and concerns individually and through different channels of communication. We recognize that individual concerns are just as important as group concerns and will continue efforts to reach out to individual fishermen and respect requests for anonymity.

VI. Offshore Coordination and Communication Protocols

Effective and efficient communication with fishermen and other marine users is a high priority. We strive to ensure that fishermen are aware of our offshore activities and feel comfortable reaching out with questions and concerns. The protocols outlined below are procedures that we currently implement and/or will implement as the Project proceeds through the offshore construction phase. Aspects of these protocols will continue to be refined in consultation with fishermen, project contractors, and regulatory agencies.

Marine Coordination Center

Vineyard Wind will establish a Marine Coordination Center (MCC) in New Bedford, Massachusetts that will serve as a construction logistics center for the Project and will be the single point of contact between the onshore office and offshore activities. The MCC will monitor vessel corridors and ports, manage and track all construction vessels (with AIS), and coordinate logistics; liaise with the USCG, port authorities, and others; coordinate with fishermen and other mariners in advance of cable laying (by providing notices to mariners to minimize conflicts between construction and recreational/commercial vessels); maintain temporary safety zones around all construction activities; establish a vessel traffic management plan; and coordinate with local pilots during construction. The MCC will also monitor for traffic, safety, intrusion, and environmental permit compliance.

Protocol for Notification Prior to the Start of Construction Activities

Prior to the start of pre-construction and construction activities, Vineyard Wind will issue a Notification of Construction Activities and/or Offshore Wind Mariner Update.³ These and other notifications will be posted on our website, sent to our FRs for distribution to their networks, and shared with the Massachusetts Division of Marine Fisheries (MA DMF) to post on their listserv.

Vineyard Wind will further ensure that such communications are widely circulated by sharing them in the manner described below. In addition to these measures, in the time leading up to offshore construction, we will hold regulator meetings with FRs and conduct targeted outreach to fisheries that may be affected by offshore construction activities to ensure they are aware of what is happening offshore.

³ See www.vineyardwind.com/offshore-wind-mariner-updates.

Individuals and groups that want to be updated on the Project’s offshore construction plans should visit our website and sign up for email and/or text alerts.

Email/Text

All updates published on the website will be circulated weekly via email and text to a distribution list that fishermen have signed up for on our website. Fishermen can sign up for text updates by texting “VINEYARDWIND” to 844-621-2170.

Social Media

All updates published on the website will be published weekly on Vineyard Wind’s social media channels, which include Facebook, Twitter, Instagram, and LinkedIn.

Waterfront App

Vineyard Wind has been working with an app developer to advance a cell phone app called Waterfront, where mariners or other stakeholders can view the latest information about the Project and all mariner updates. We are also discussing the possibility of other developers using this app to display their information. The Waterfront APP is in the beta phase and has not been released yet but could be used to further publicize a Notification of Construction Activities.

Posters/Pamphlets

Vineyard Wind will create small posters/pamphlets that will be placed along the waterfront at strategic points to maximize visibility. These posters will provide information about the website, mariner updates, and other options for receiving information about the Project.

Fishing Vessel Communication Protocol

Offshore construction activities for the Project commenced in 2022 with the installation of the offshore export cable. Construction of the wind turbine array within Lease Area OCS-A 0501 (referred to as the wind development area, WDA) is scheduled to begin in mid-2023.

Vineyard Wind is continuing to work with project contractors to refine the fishing vessel communication protocol to ensure clear two-way communication channels are maintained between fishermen and project vessels throughout the construction phase. Protocols will therefore be updated on an as-needed basis.

During Construction Activities

Project Vessel Communication

All project vessels will be required to maintain a watch and communicate on VHF Channel 16 (156.800 MHz) and VHF channel 13 (156.65 MHz). All communications will be in English.

Pre-Lay Cable Installation Activities

Pre-lay cable installation activities in state waters may include boulder removal, pre-lay survey work, and a pre-lay grapnel run. These activities will be supported by local fishing vessels that scout ahead of the pre-installation vessels performing this work. The scout vessel’s role is to help communicate upcoming activities to fixed gear fishermen; locate fixed fishing gear and identify owners; and communicate fixed gear locations to pre-installation project vessels. Subject to vessel space availability, and further discussions with project contractors, Vineyard Wind may also use OFLs on pre-installation vessels.

Cable Installation Activities

During cable installation, guard vessels will be employed around USCG-approved safety zones. Based on the results of the pre-installation work and whether it is deemed necessary and beneficial, similar techniques such as scout vessels and OFLs, may be used during cable installation. In addition to the above, the FL or a designated appointee will be available 24/7 during cable installation activities to communicate with fishermen from shore and coordinate with the MCC and MOO to ensure offshore activities are communicated to fishermen and negative interactions are avoided.

After Construction Activities

Vineyard Wind will work with the National Oceanic and Atmospheric Administration and MA DMF to develop a communication protocol to communicate cable protection locations that impact the seafloor, if necessary.

Grievance Mechanism Protocol

Vineyard Wind has established a grievance mechanism that will provide a platform for fishermen and other stakeholders to raise their concerns through a transparent, fair, and accessible process. The information in Table 1 will be distributed to external stakeholders via our website, mailings, newspaper notices, and other means. Grievances may be submitted anonymously. If shared, personal information will not be disclosed to third parties and will only be used internally to support the investigation and resolution process.

Table 1 Grievance Reporting Channels

Channel	Description
Telephone	Contact the Vineyard Wind confidential, third-party hosted Ethics & Compliance hotline: 833-609-5768
Written	Submit a written grievance to Vineyard Wind via: <ol style="list-style-type: none"> (1) Vineyard Wind’s third-party hosted webform: vineyardwind1.ethicspoint.com (2) Email to: info@vineyardwind.com (3) Post at: 700 Pleasant Street, Suite 510 New Bedford, Massachusetts 02740
In Person	Report a grievance to any Vineyard Wind employee

Communication during Operations / Safety Management System

An important objective of this FCP is to use fisheries communications to enhance the safety of all those who work on the ocean in a project area during development, construction, operations, and decommissioning. Vineyard Wind’s Safety Management System (SMS) will outline clear communication protocols and procedures for emergency events such as collision or allision of a vessel with a wind turbine structure, gear entanglement, damage to cabling by fishing activity, catastrophic failure of a wind turbine, or another event. Safety planning will be further elaborated in the SMS and will be a publicly available document that is completed prior to the start of offshore construction activities. Wind turbine tower and

offshore substation lighting and marking will adhere to USCG, Federal Aviation Administration, and BOEM requirements.

VII. Financial Compensation

Gear Loss/Damage

Vineyard Wind has worked with FLs from other developers and the Project's FRs to create a standard gear loss/damage claims form. This form has been adopted by Equinor, Mayflower, and Vineyard Wind and is provided in Appendix 2. It is also available on our website along with the contact information for other offshore wind developers FLs.

Fisheries Compensation

Vineyard Wind has created a program to provide compensation to fishermen for lost income attributable to Vineyard Wind's construction and operations activities. Vineyard Wind has created the WDA Compensation Program with a primary objective to provide fair, equitable compensation to fishermen and fishing businesses (i.e., shoreside businesses) for economic losses attributable to Vineyard Wind's construction, operations, and decommissioning activities. Compensation for impacts associated with the installation of the offshore export cable has been completed

Three escrow funds have been established to compensate affected fishermen in Massachusetts, Rhode Island, and Other States (Connecticut, New Jersey, and New York). Compensation is also available to fishing businesses with demonstrated losses due to the project activities. The WDA Compensation Program will be overseen by an independent Third-Party Administrator who will manage the claims review and payments processes in collaboration with expert Fishery Advisors representing fixed and mobile gear fisheries.

WDA Compensation Program updates will be posted on our website on a going-forward basis.

VIII. Fisheries Science Program

Vineyard Wind recognizes the importance of and prioritizes collaborative science opportunities. Regionally focused collaborative research is the best approach to further the understanding of the offshore environment and the potential effects of offshore wind development. Collaboration and data sharing with environmental and fisheries stakeholders are also essential to build trust, identify priority research gaps, and address such gaps cost-effectively. We are firmly committed to timely data sharing, transparent communication, and supporting independent and collaborative scientific research.

Vineyard Wind has invested heavily in fisheries science, going well above and beyond regulatory requirements. Among other things, we have worked with SMAST since 2018 to design and carry out fisheries monitoring plans that would capture potential fisheries impacts from offshore wind construction. Early on, Vineyard Wind recognized the value of incorporating fishing community input into the planning stages of its research and data collection efforts. Towards that end, we tasked SMAST with hosting multiple interactive workshops with the fishing industry to identify priority areas for fisheries and ecological impact assessment.

Based on the input received from more than 75 commercial and recreational fishermen that attended these workshops, and input from academics and government resource agencies, SMAST recommended a number of fisheries monitoring and research methods, which Vineyard Wind subsequently adopted to

guide its fisheries monitoring plans. All the fisheries surveys are conducted on commercial and recreational fishing vessels, and the Fisheries Monitoring Plan follows a collaborative and adaptive approach.

A scientific advisory group consisting of three fisheries scientists and eight fishermen was formed in 2021 to review the annual monitoring data, review data analyses and interpretations, and recommend improvements to the Fisheries Monitoring Plan if needed. The ongoing collaboration with the fishing industry ensures that local ecological knowledge and expertise with fishing gear are incorporated into the Project's survey designs. A public meeting followed the scientific advisory review of the Fisheries Monitoring Plan to share the results and provide another opportunity for public comment. A recording of the public meeting and the report of the 2021 review of the Fisheries Monitoring Plan is available on our website: www.vineyardwind.com/fisheries.

Vineyard Wind also previously partnered with the New England Aquarium Anderson Cabot Center for Ocean Life to study highly migratory species (HMS) presence across the MA WEA and Rhode Island/Massachusetts Wind Energy Area (RI/MA WEA), which was a direct request from recreational fishermen. The study involved a desktop compilation of conventional tagging data, large pelagics survey data, and input from the pelagic recreational fleet on fishing behavior in the WEA through an online survey. The study determined that recreational effort for HMS is widespread throughout southern New England, with the highest levels of recreational fishing activity occurring to the west of the MA WEA and RI/MA WEA. Results from that study are available online at: www.vineyardwind.com/fisheries-science.

This initial study led to a regional effort to monitor the presence/absence of HMS in and around the RI/MA WEA. Vineyard Wind, along with other offshore wind developers, is collaborating with researchers from the New England Aquarium and recreational fishermen to deploy 74 acoustic receivers in offshore wind lease areas and to attach acoustic tags to HMS species (e.g., tuna, shark, and marlin) so their movements can be tracked in and around the lease areas before and after construction. So far, 71 fish have been tagged; tagging efforts and acoustic receiver deployment are planned to continue over the next four years.

Vineyard Wind proactively publishes the Project's fisheries monitoring data and related research online. Pre-construction surveys for the lease area have been finalized and the resulting reports are available at: www.vineyardwind.com/fisheries-science. Construction surveys and three years of post-construction surveys will proceed in line with the Construction and Operations Plan Terms and Conditions issued by BOEM for the Project. The company will also continue working with other developers to monitor the presence and absence of HMS during and post-construction.

IX. Fishing Industry Initiatives

Aside from building relationships with the region's fishermen and fisheries stakeholders, one key objective of Vineyard Wind's communication efforts is to support the fishing industry. This focus has resulted in the following efforts over the years:

- **COVID-19 testing and vaccinations:** Vineyard Wind initiated a consortium among the MA WEA and RI/MA WEA leaseholders to contribute funds to a Southcoast Health pilot program offering free COVID-19 testing directly at the Port of New Bedford. After initial funding was exhausted, Vineyard Wind alone continued supporting the program after receiving direct feedback from fishermen and shore support workers that extending the program would be beneficial. An additional nine weeks

of testing (with 59 tests administered) was supported by Vineyard Wind until Southcoast Health switched to providing vaccinations.

- **Seafood Distribution Program donations:** Vineyard Wind made three \$5,000 donations to the Commercial Fisheries Center of Rhode Island to support a mutual aid program designed to benefit households experiencing food insecurity and assist the fishing industry during the COVID-19 pandemic. The program purchases seafood directly from fishermen at or above market price and then donates the seafood to community organizations that provide it to families in need. Since the start of this program in late August 2020, over 200,000 pounds of fresh local seafood have been distributed. Additional information about the program is available at: www.cfcri.org/seafood-donation-program.html.
- **False albacore pilot study donation:** The American Salt Water Guides association is partnering with the Anderson Cabot Center for Ocean Life at the New England Aquarium on a pilot study to acoustically tag 50 false albacore off southern New England to investigate false albacore movements and post-release mortality. Vineyard Wind has donated funds for this research effort. Additional information is available at: www.saltwaterguidesassociation.com/new-research-partnership-to-focus-on-beloved-but-understudied-false-albacore/.
- **Vessel Request for Information:** Vineyard Wind issued an RFI in December 2020 to engage with vessel owners and fishing vessel crews who may be interested in offering services to Vineyard Wind. Additional information is available at: www.vineyardwind.com/vesselrfi.
- **WATERFRONT App:** Vineyard Wind is working with Ithaca Clean Energy to develop a cellphone app that shows all of Vineyard Wind's offshore activities on an interactive map and provides a portal for fishing vessel crews and mariners to submit inquiries directly to Vineyard Wind. Vineyard Wind's goal is for the app to provide a single, consolidated location for fishing vessel crews and mariners to connect with and view information from all the MA WEA and RI/MA WEA leaseholders to help reduce email/text clutter and reduce uncertainty about which developer activities apply to that fishermen's operations.

X. Recent Community Events and Sponsorship

- Port hours in New Bedford, MA; Point Judith, RI; Montauk, NY; Stonington, CT
- Open house opportunities at council meetings – Mid-Atlantic Fishery Management Council and New England Fishery Management Council
- Striper Fest in Falmouth, MA
- New England Saltwater Fishing Show, Providence, RI
- Cook a Fish Give a Fish – Eating with the Ecosystem
- Big 3 Fishing Tournament
- Fishing For a Cause
- Oak Bluffs Blue Water Classic
- Martha's Vineyard Striped Bass and Bluefish Derby

Appendix 1: Fisheries Representatives

Coastal Asset Management LLC

Michael Theiler
Lobster.mike@yahoo.com
860-235-1117 (cell)

Coastal Asset Management was formed by Gordon Videll, Gary Yerman, and Michael Theiler in Southeastern Connecticut. “Together we have decades of experience as professional mariners and extensive knowledge of local waters that allow us to provide and distribute information in an effective and meaningful manner to the local fishing community.”

Commercial Fisheries Center of Rhode Island

www.cfcri.org
Fred Mattera, Executive Director
fredmattera66@gmail.com or fredmattera@cfcri.org
401-874-4568 (office) or 401-741-4178 (cell)

Shaye Rooney, Assistant Director
shayerooney@cfcri.org
401-316-0081 (cell)

The Commercial Fisheries Center of Rhode Island (CFCRI) is the home of the Ocean State's commercial fishing community. It was founded to preserve commercial fishing as a profession, culture, and way of life through promoting the sustainability of the resource. CFCRI believes in cultivating an environment of open communication and encouraging the sharing of knowledge about our ocean and its resources. In the pursuit of sustainable seas, CFCRI's approach is innovative, their lens is optimistic, and their goals are ambitious.

CFCRI's members believe in commercial fishing as a profession, a culture, and a way of life. CFCRI seeks to preserve the sanctity of the local fishing community, the solvency of small businesses, and the sustainability of the fishery resource. CFCRI serves as a headquarters to bring fishermen, scientists, managers, and elected officials together in a collaborative effort to improve local fisheries and understanding of the marine environment so that the proud heritage of our industry continues nobly through future generations.

Massachusetts Lobstermen's Association, Inc.

www.lobstermen.com
Beth Casoni
781-545-6984 (office) or 508-738-1245 (cell)

The MLA is a member-driven organization that accepts and supports the interdependence of species conservation and the members' collective economic interests. It was established in 1963 by the fishermen, for the fishermen, and is presently one of the leading commercial fishing industry associations in New England. On behalf of the 1,800 members, the MLA works to maintain both the industry and the resource. It strives to be proactive on issues affecting the lobster industry and is active in the management process

at both the state and federal levels. The MLA communicates with its members through a monthly newspaper, weekly email, Facebook, Twitter, and attendance at meetings. For the past 54 years, the MLA has become a trustworthy voice for the industry on important issues and is looked to by both the fishing industry and the management community.

The Martha's Vineyard Fishermen's Preservation Trust

mvfishermen@gmail.com
508-687-0344

The MVFPT is a Massachusetts 501(c)(3) non-profit corporation established in 2011 to: (i) Preserve the historic fishing fleets, communities, and economies of Martha's Vineyard; (ii) Protect the marine populations and fishing grounds off the coast of Martha's Vineyard and New England; and (iii) Educate the community about its local fisheries.

The Montauk Fish Dock

Paul Farnham
paulfarnham1@gmail.com
631-835-9355 (cell)

The Montauk Fish Dock (Dock) is a commercial fish unloading packing and freight forwarding facility located in Montauk, New York. The Dock provides diesel fuel, ice, dockage, and fresh water. The Dock has been servicing the fishing fleet since 1988. Customer gear types are inshore and offshore draggers, inshore and offshore gillnetters, offshore bottom and surface longliners, inshore and offshore lobster, offshore sea scallop, and inshore and offshore rod and reel. The fleet consists of approximately 40 fishing vessels of which 20 vessels fish all year.

New Bedford Seafood Consulting

Jim Kendall, Executive Director
nbsc@comcast.net
508-997-0113 (office) or 508-287-2010 (cell)

Mr. Kendall is the Executive Director of New Bedford Seafood Consulting. He is a former scallop fisherman with over 50 years of experience in the fishing industry and with fisheries issues. Mr. Kendall was a member of a research team for the Commercial Fisheries Research Foundation that focused on discard mortality rates of Southern New England flatfish. Mr. Kendall served as a New England Fishery Management Council member for numerous terms. He has also served on the Massachusetts Fisheries Recovery Commission, the New England Commercial Fishing Law Enforcement Working Group, and is a founding member of the Massachusetts Fishermen's Partnership. Mr. Kendall was featured in the book *A Doryman's Reflection: A Fisherman's Life*. Additionally, he has been interviewed on WBSM radio and by the New Bedford Standard Times, the Gloucester Times, and the Boston Globe on fisheries issues.

New Bedford Port Authority

www.portofnewbedford.org
508-961-3000

The NBPA is the governing body for New Bedford's harbor and city-owned waterfront properties. It is chaired by the Mayor of New Bedford with six other members. The role of the NBPA is to support the Port of New Bedford by continually upgrading port resources; preserving its spot as the #1 U.S. fishing port; and expanding the New Bedford economy. The NBPA oversees all the commercial and recreational vessel activity within New Bedford city limits, incorporating the city's entire coastline and harbor.

The American Saltwater Guides Association

www.saltwaterguidesassociation.com

Tony Friedrich

202-744-5013

tony@saltwaterguidesassociation.org

Willy Goldsmith

617-763-3340

willy@saltwaterguidesassociation.org

The American Saltwater Guides Association is the organizing voice for members of the recreational fishing community who find greater value in having access to abundant fish stocks rather than simply maximizing harvest. Members include for-hire captains and guides, fishing-related small businesses, and private anglers from Maine to Florida who fish for a broad range of state- and federally-managed species.

Tyler MacAllister- Representing the commercial and recreational hand gear fishery for HMS

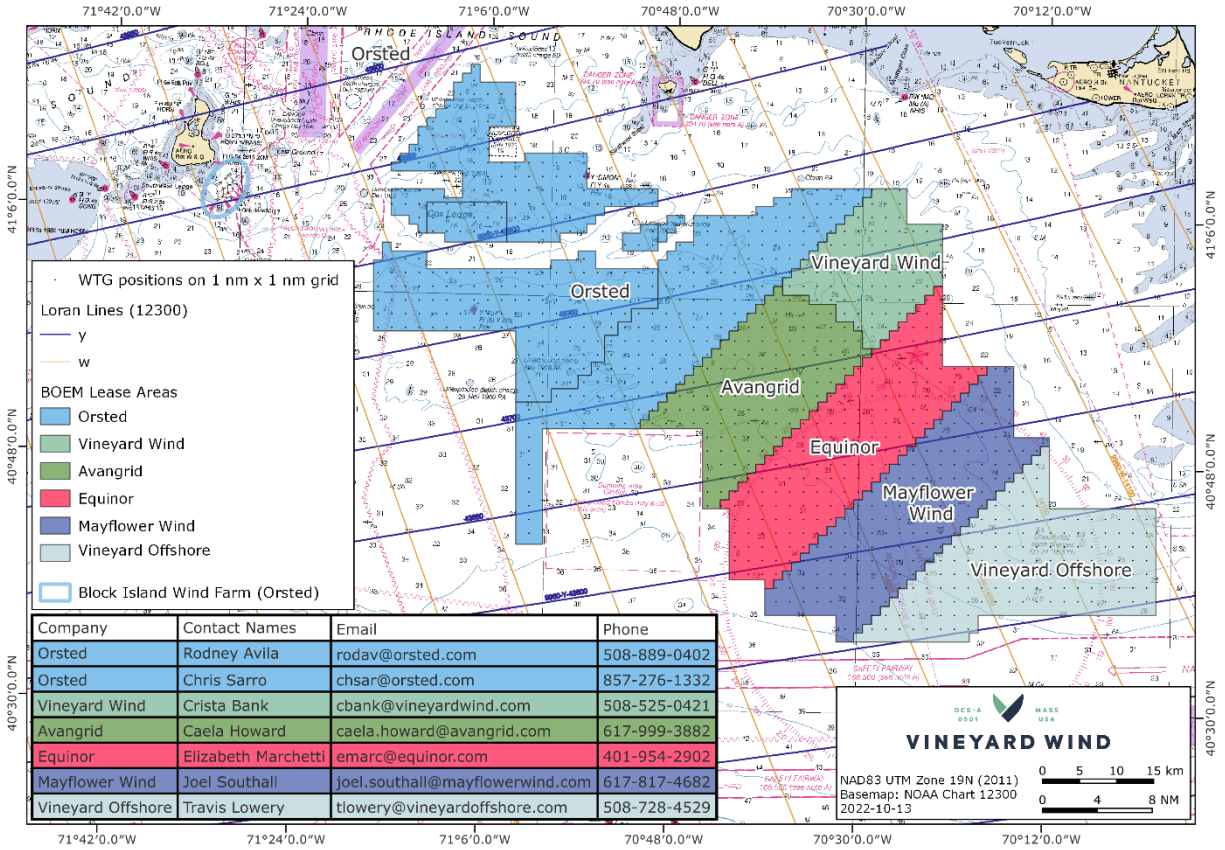
fvcynthiac@comcast.net

508-221-8991

Captain R. Tyler Macallister has been a commercial and charter fisherman for 36 years, fishing for groundfish, striped bass, and bluefin tuna in New England. Captain Macallister holds degrees in Marine and General Biology from the University of Massachusetts, Dartmouth, where he focused on large pelagic species specifically bluefin tuna and other HMS. He currently serves on several NOAA committees for both recreational and commercial fishing for HMS and has contributed to the ongoing research by providing photos and videos taken from both boats and spotter planes. He also holds a master's degree in Business providing a unique perspective to the economics of both recreational fishing and the impacts of regulatory, fish population fluctuation, and other variables that may affect fisheries.

Appendix 2: MA WEA FL Contact Information and Gear Loss Damage Form

MA WEA FL Contact Information



Gear Loss Claim Application



Gear Claims Procedure:

- Renewable energy developers recognize the possibility of offshore wind activity and commercial fishing gear encounters. However, with proper communication, gear interactions in connection with the construction and operations of offshore wind farms can be limited. In the event there is gear loss or damage caused by developer activities, a claim may be submitted in accordance with the claim procedure below. This joint developer claim form only facilitates the filing of a claim and does not dictate the claim review procedures each developer may follow.

Filing a Claim:

- A fisherman who sustains gear loss/damage that she/he believes was caused by a developer's activities (surveys, cable laying, construction vessels) should document the time and location of the lost/damaged gear and, if possible, collect photographs or other visual evidence, but only if collecting such visual evidence does not entail risk of harm or injury to the fisherman. Please contact the appropriate Fisheries Liaison and notify her/him of the incident as soon as safe and practical via cell/text/email.

To Submit a Claim, Applicant Must:

- Provide a complete, legible, executed application form, including accompanying photographic or visual evidence, if available, within 30 days of the incident. The form should be submitted to the Fisheries Liaison from the lease area where the loss/damage occurred (chart and contact information below). Fisheries Liaisons and Fishing Representatives are available to assist with the application form. Incomplete applications will not be accepted.

Claim Review:

- Claims will be reviewed by the developer to whom the claim form is submitted in accordance with the claim procedures established by the developer. A timeline of the event will be established and matched to the AIS tracks of the offshore wind vessels, and the ships' daily log of interaction/communication. Developers reserve the right to request additional information to support review of a claim.
- If the claim is approved or denied, a written explanation will be provided to the Applicant within 30 days of receipt of a completed claims application form.
- If the claim is approved, a check will be provided to the Applicant.
- Applicants who disagree with a claim decision, or part of a decision, may file a written notice of appeal, in accordance with the developer's claims procedures, which may include a third-party review. The decision on appeal will be final and not subject to any further right of appeal under the developer's procedures.

Gear Loss Claim Application



Applicant Name	Date Submitted
Phone	Email
Business Name	Address
Vessel Name	Home Port
Vessel Documentation Number	Federal Fishing Permit
State Landing Permit	Gear Type
Date and Time of Incident	Weather Conditions (Optional)
Claim Amount	Location of Gear Loss (Lat/Long OR Loran)
Description of Loss or Damage Sustained	Description of Incident Causing Damage/Loss

Gear Loss Claim Application



Description of Incident Causing Damage/Loss:	Gear Description (e.g., Markings/polyballs, highflyers, etc.)
Offshore Wind Vessel(s) in the Area	Last Time Gear was Set and Hauled:
Was any of the Gear Retrieved?	How Many Gillnets, Pots, Highflyers, Trawl, Doors, Ground Cables, Scissor Leggs, etc. are Lost/Damaged?
Attachments to include <ul style="list-style-type: none">- Invoice for Replacement Gear or Gear Repair (if applicable)- Photo of chart plotter/tracks (if applicable)	
FILL OUT THIS SECTION IF CLAIMING LOST FISHING TIME	
Description of Normal Fishing Activity/Fishing Gear Configuration	
Date of Replacement	Date of Loss
Attachments to include <ul style="list-style-type: none">- Proof of Fishing Landing History through VTR, Sales Slip, or Similar Type of Documentation	

Gear Loss Claim Application



By submitting this Application to Vineyard Wind, Applicant authorizes Vineyard Wind to make whatever reasonable inquiries and investigations it deems necessary to verify the Application and request for compensation. Applicant understands that submitting this Application does not guarantee payment. Applicant further agrees that if the claim is accepted and paid, acceptance of such payment constitutes full, final and complete payment for this particular claim and that neither Vineyard Wind, nor any of its affiliates, successors, officers, employees, representatives, partners, agents, or joint venture partners shall have any further outstanding or ongoing obligation with respect to this particular claim and Applicant shall not, directly or indirectly, assert any claim, or commence, join in, prosecute, participate in, or fund any part of, any suit or other proceeding of any kind against Vineyard Wind, or any of its affiliates, successors, officers, employees, representatives, partners, agents, or joint venture partners. If a claim is denied in part, Applicant may accept payment for the undisputed part without waiving Applicant's right to appeal the disputed part of the claim. Applicant recognizes that submission of this Application does not affect Applicant's rights concerning matters other than those specifically identified in this Application.

I attest, under penalty of perjury, that to the best of my knowledge the information in this Application is true and correct.

Applicant Signature: _____

Date: _____