



FISHERIES WORKING GROUP MEETING

November 22, 2019

Vineyard Wind Update

Fisheries Surveys

- Trawl

- Ventless Trap

- Drop camera

- HMS

- Monitoring review group

Fisheries Liaisons coordinating outreach efforts

- Once a month – different ports

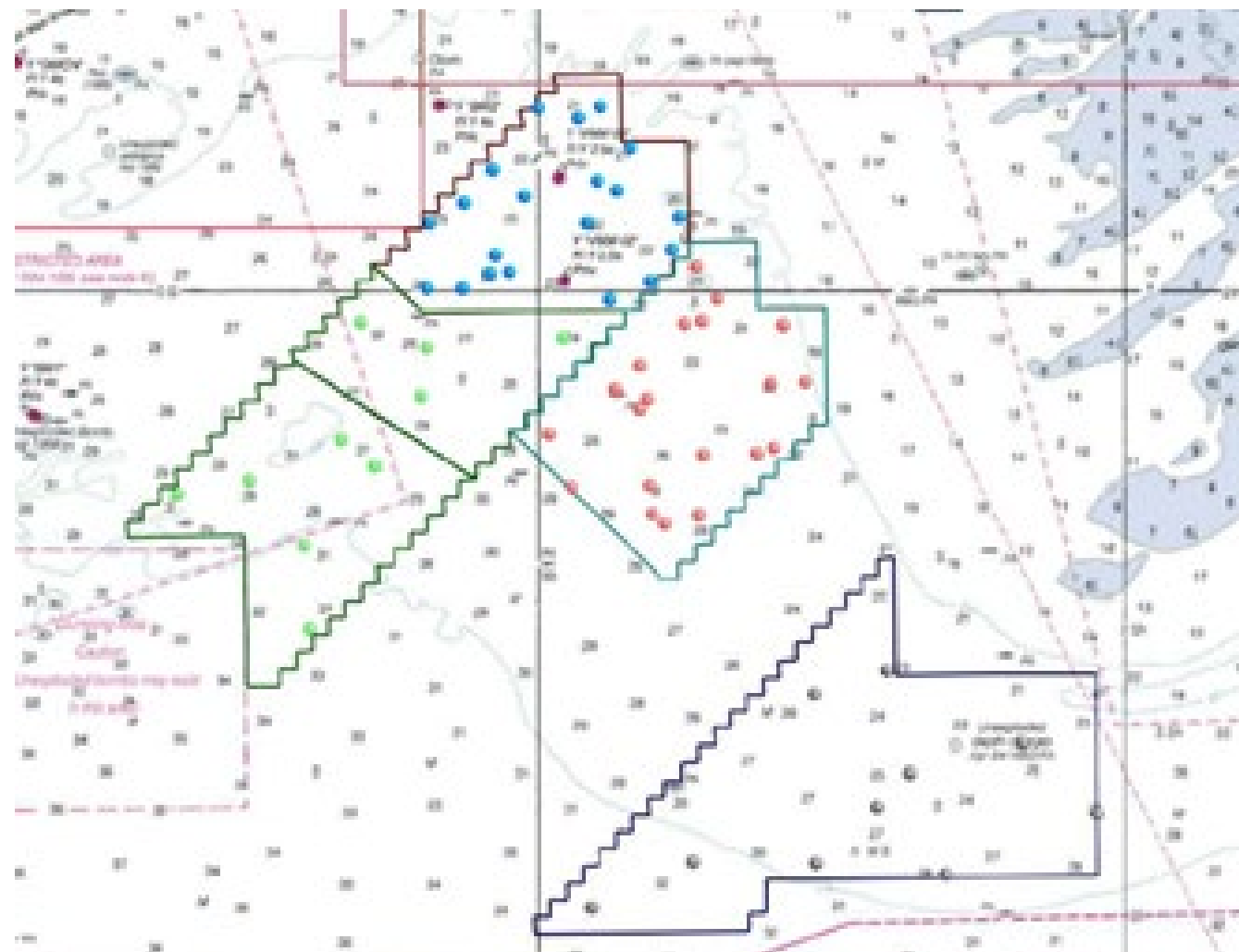
- Shared website – mobile device friendly

Re-establish a working group through the FWG to standardize gear loss procedures

Radar study

Fisheries Surveys – Trawl Survey 501N/S and 522

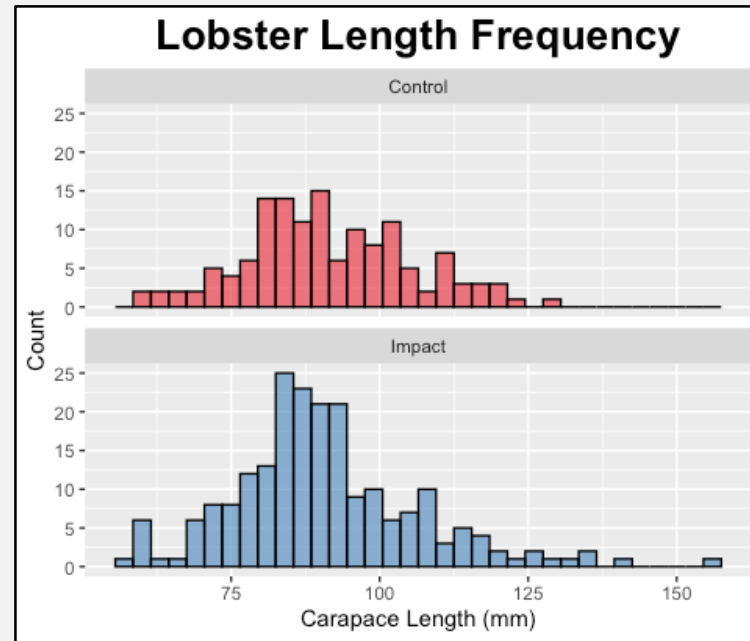
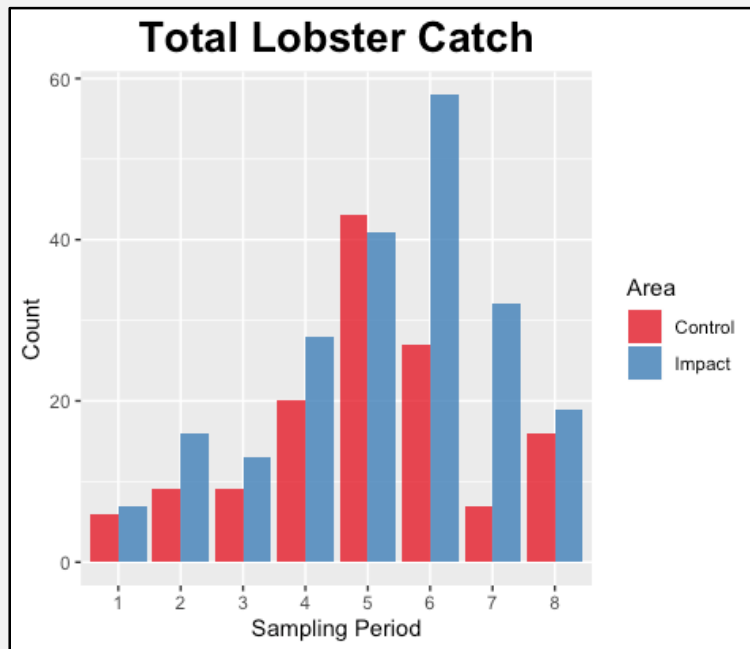
Species	Total Weight
Hake, Silver (Whiting)	2141
Hake, Red	1924
Skate, Winter	1880
Skate, Little	1192
Dogfish, Spiny	969
Alewife	862
Butterfish	479
Skate, Barndoor	355
Dogfish, Smooth	312
Monkfish	213
Mackerel, Atlantic	206
Squid, Atlantic Long-fin	189
Haddock	77
Flounder, Fourspot	76
Crab, Rock	49
Winter (Blackback)	38
Summer (Fluke)	33
Menhaden, Atlantic	32
Ocean Pout	29
Squid, Short-fin	29
Flounder, Yellowtail	11
Shad, American	8
Flounder, Gulfstream	8
Sculpin, Longhorn	4
Windowpane	2
Herring, Atlantic	1
Lobster, American	1
Northern Sea Robin	1
Cunner	1
Hake, Spotted	1



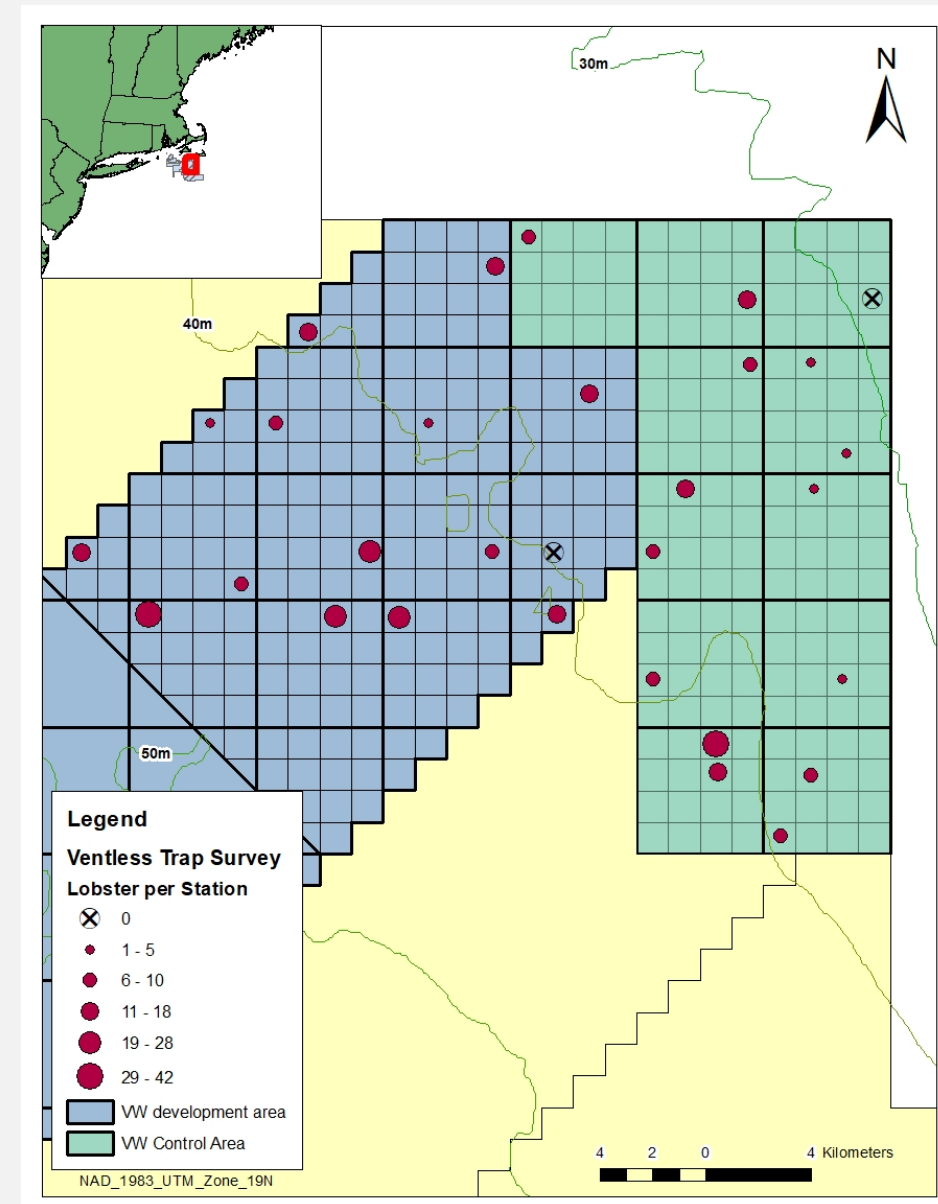
RESULTS: VENTLESS TRAPS

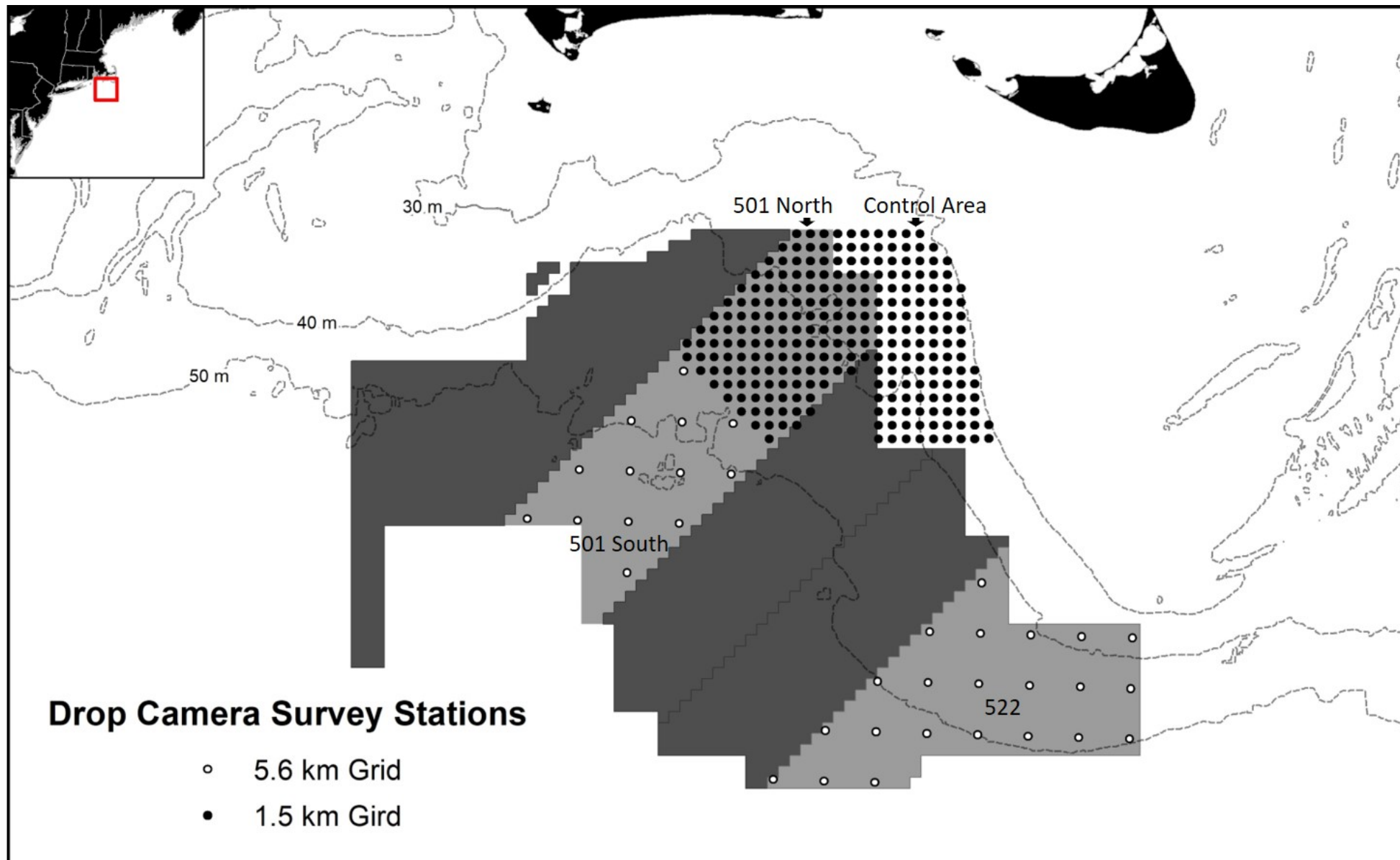
Total Lobsters: 351

- Control (n=214, 91.3 ± 2.38mm)
- Impact (n=137, 90.8 ± 2.15mm)

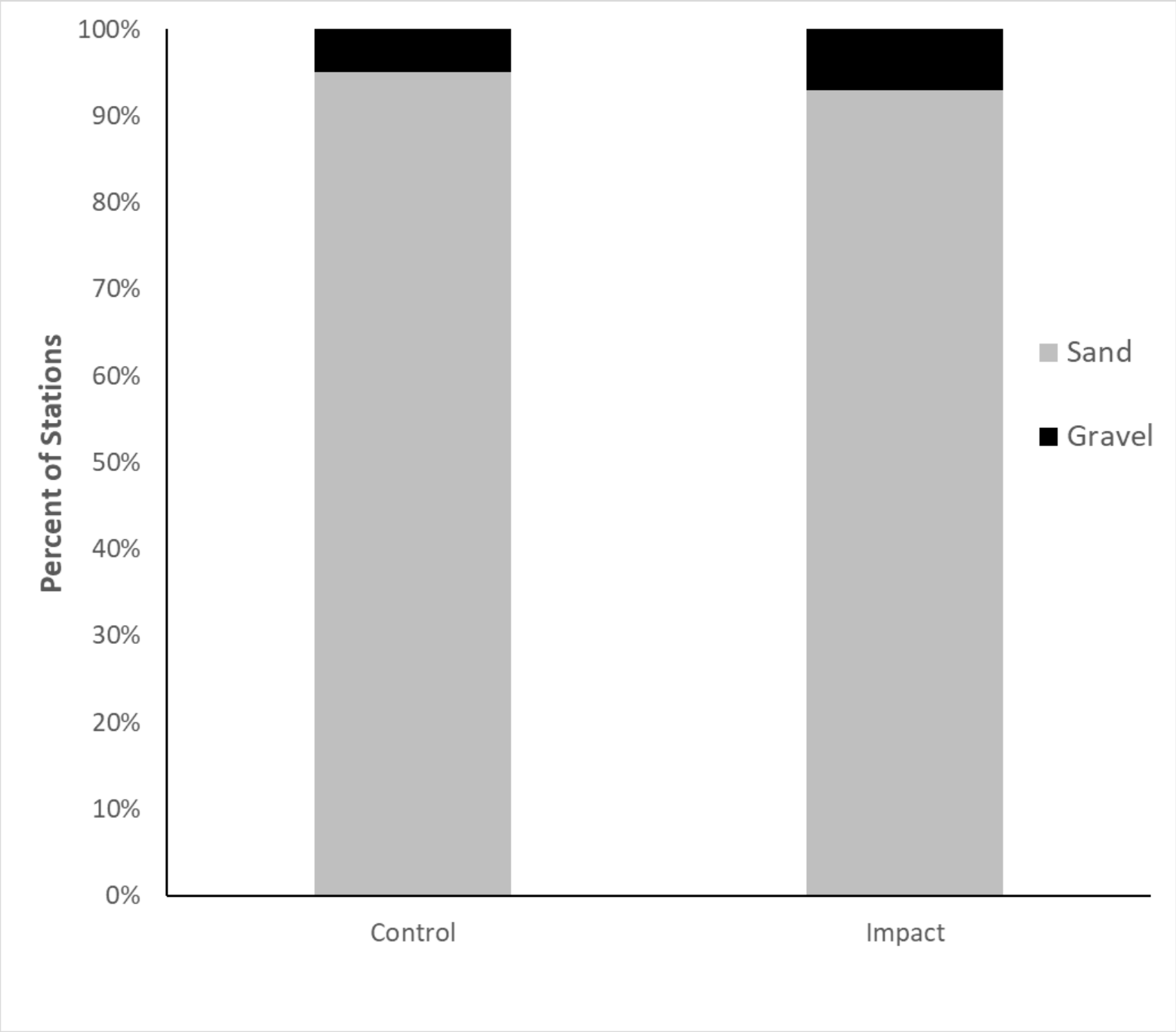


- 1.88:1 Male-Female sex ratio
 - 41% of females carrying eggs
- Lobster size breakdown:
 - Vented (n=196, 95.5 ± 2.12mm)
 - Ventless-(n=155, 85.1 ± 2.12mm)





	Stations	Scallops	Crabs	HermitCrabs	Lobster	Whelk	Moonsnail	Flounder	Skate	Red hake
VW_501BACI										
Control	124	1	27	323	0	226	11	8	49	27
Impact	107	5	33	342	0	147	17	15	20	39
Leased	27	0	9	63	0	18	5	5	6	14
VW_501S	13	0	4	14	0	12	0	6	0	3
VW_522	22	0	91	21	0	3	6	2	4	18



New England Aquarium

Highly Migratory Species

- Historical Data Mining for presence of HMS in MA/RI Wind Energy Area
- Surveying pelagic recreational community for fishing activity in MA/RI WEA

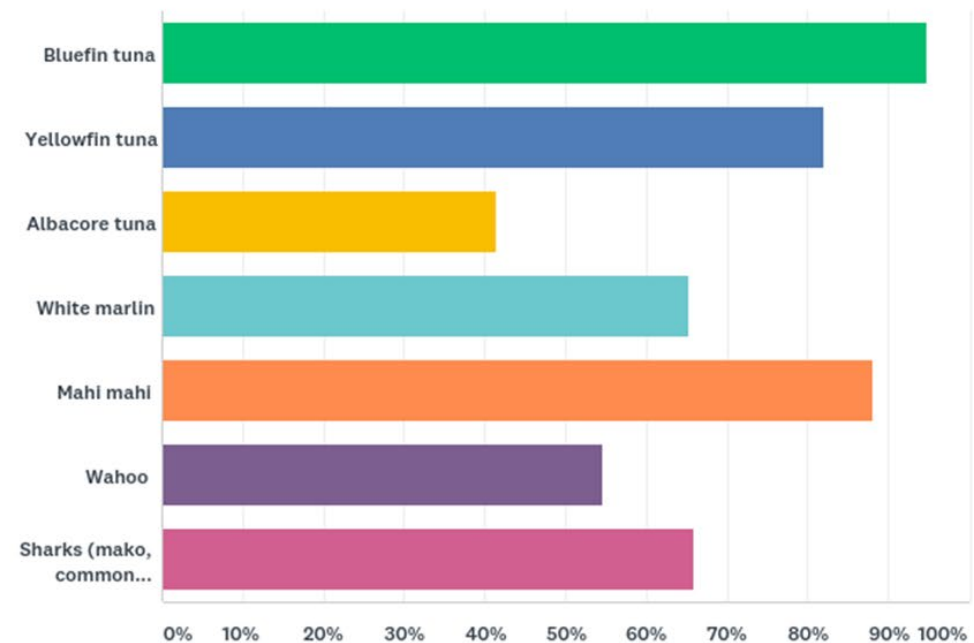
**Survey online until the end of
November**

<https://www.onthewater.com/survey-for-south-of-the-vineyard-fishermen>

Fishermen Survey

- 150 respondents
 - Private angling permits (n=124)

Q2 What highly migratory species (HMS) do you target when fishing in these offshore areas?
Please check all that apply.





Fisheries Surveys

- Trawl

- Ventless Trap

- Drop camera

- HMS

Monitoring review group

Fisheries Liaisons coordinating outreach efforts

- Once a month – different ports

- Shared website – mobile device friendly

Re-establish a working group through the FWG to standardize gear loss procedures

Radar study